

# Monthly Reporting

## Report from 01 July 2015 to 31 July 2015

### Report for Resource Pool XC on ARCHER

A total of 1,317,772.797 kAU were available during this period.

#### Use and Allocations (by Project)

In the following table Charged refers to usage which was charged against the project Allocation. This excludes any usage discounted via incentive schemes. The (Allocation) column is the time allocated to the project, scaled according to the reporting period and shown as a fraction of the available resources.

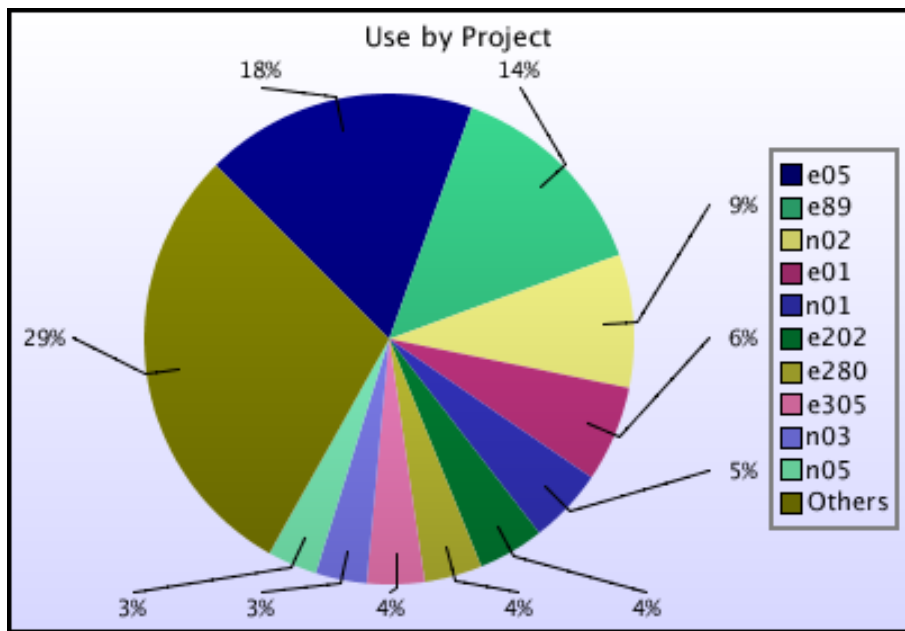
Project	Project Class	Number of Jobs	Charged kAUs	Charged Utilisation	Used kAUs	Utilisation	Allocated kAUs	Allocation
e01	Consortia	1,550	57,491.0	4.36%	73,843.2	5.60%	93,413.6	7.09%
e05	Consortia	14,435	206,468.5	15.67%	209,347.2	15.89%	176,664.9	13.41%
e89	Consortia	11,546	161,633.2	12.27%	162,094.2	12.30%	159,606.6	12.11%
e280	Consortia	2,591	44,499.3	3.38%	44,499.5	3.38%	51,374.2	3.90%
e281	Consortia	2,976	24,394.0	1.85%	24,397.0	1.85%	27,406.3	2.08%
e283	Consortia	65	4,212.1	0.32%	4,212.1	0.32%	21,822.5	1.66%
e305	Consortia	1,001	43,993.5	3.34%	44,007.7	3.34%	28,325.1	2.15%
e410	Leadership Awards	270	12,200.0	0.93%	12,200.1	0.93%	7,496.5	0.57%
e411	Leadership Awards	1,789	13,873.2	1.05%	13,896.2	1.05%	10,106.4	0.77%
e412	Leadership Awards	41	7,522.2	0.57%	7,522.2	0.57%	5,287.7	0.40%
e413	Leadership Awards	87	1,602.3	0.12%	1,602.3	0.12%	8,430.4	0.64%
e414	Leadership Awards	94	25,781.9	1.96%	25,876.1	1.96%	11,180.3	0.85%
e421	Leadership Awards	17	20,804.4	1.58%	20,804.4	1.58%	19,136.2	1.45%
e422	Leadership Awards	27	1,490.1	0.11%	1,490.1	0.11%	6,107.1	0.46%
e424	Leadership Awards	0	0.0	0.00%	0.0	0.00%	13,694.7	1.04%
c01	Class1a	96	5.1	0.00%	6.9	0.00%	1,776.9	0.13%
e10	Class1a	65	730.4	0.06%	730.4	0.06%	7,873.7	0.60%
e71	Class1a	155	3,592.2	0.27%	3,592.2	0.27%	2,572.1	0.20%
e110	Class1a	75	7,020.5	0.53%	7,020.5	0.53%	5,053.2	0.38%
e125	Class1a	162	28,189.7	2.14%	28,189.7	2.14%	2,944.4	0.22%
e174	Class1a	119	2,832.4	0.21%	2,832.4	0.21%	5,032.6	0.38%
e179	Class1a	73	3,481.2	0.26%	3,481.3	0.26%	3,593.0	0.27%
e182	Class1a	0	0.0	0.00%	0.0	0.00%	356.7	0.03%
e184	Class1a	194	4,022.5	0.31%	4,023.0	0.31%	2,954.9	0.22%
e202	Class1a	1,169	50,662.9	3.84%	50,662.9	3.84%	47,271.3	3.59%
e220	Class1a	8	0.0	0.00%	0.3	0.00%	411.8	0.03%
e228	Class1a	31	1,438.3	0.11%	1,438.3	0.11%	494.1	0.04%
e229	Class1a	22	12.0	0.00%	12.0	0.00%	463.6	0.04%
e266	Class1a	138	2,229.3	0.17%	2,229.3	0.17%	7,145.0	0.54%
e268	Class1a	0	0.0	0.00%	0.0	0.00%	474.8	0.04%
e272	Class1a	298	565.2	0.04%	565.2	0.04%	2,032.8	0.15%
e282	Class1a	87	4.0	0.00%	4.0	0.00%	758.8	0.06%
e290	Class1a	11	0.6	0.00%	0.6	0.00%	113.5	0.01%
e291	Class1a	62	760.6	0.06%	760.6	0.06%	769.4	0.06%
e300	Class1a	34	1,219.9	0.09%	1,219.9	0.09%	760.6	0.06%
e301	Class1a	32	4,024.6	0.31%	4,024.6	0.31%	2,044.3	0.16%
e304	Class1a	440	9,759.0	0.74%	9,759.0	0.74%	7,219.2	0.55%
e320	Class1a	0	0.0	0.00%	0.0	0.00%	2,293.2	0.17%
e330	Class1a	0	0.0	0.00%	0.0	0.00%	172.7	0.01%
e331	Class1a	92	362.2	0.03%	362.2	0.03%	1,412.1	0.11%
e332	Class1a	0	0.0	0.00%	0.0	0.00%	672.3	0.05%
e333	Class1a	2	2,647.9	0.20%	2,647.9	0.20%	0.0	0.00%
e336	Class1a	0	0.0	0.00%	0.0	0.00%	180.1	0.01%

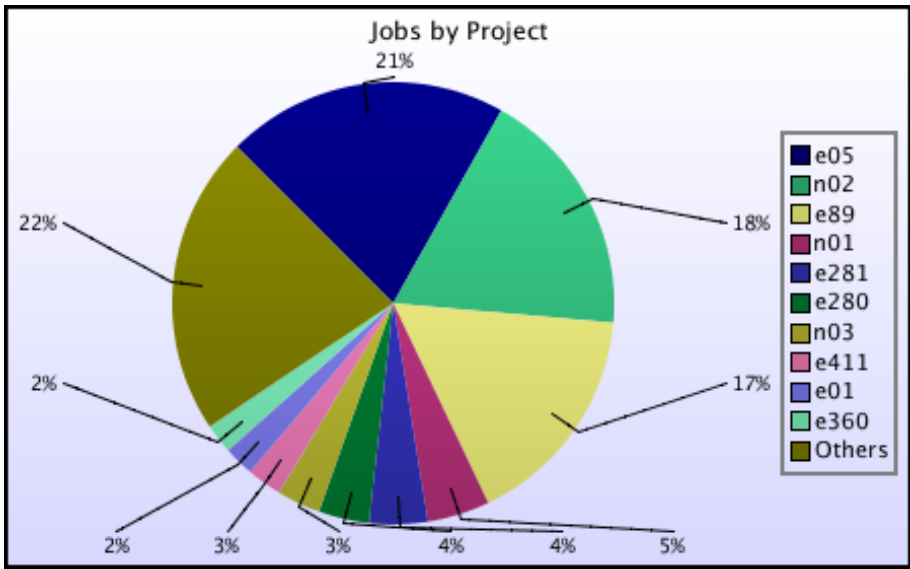
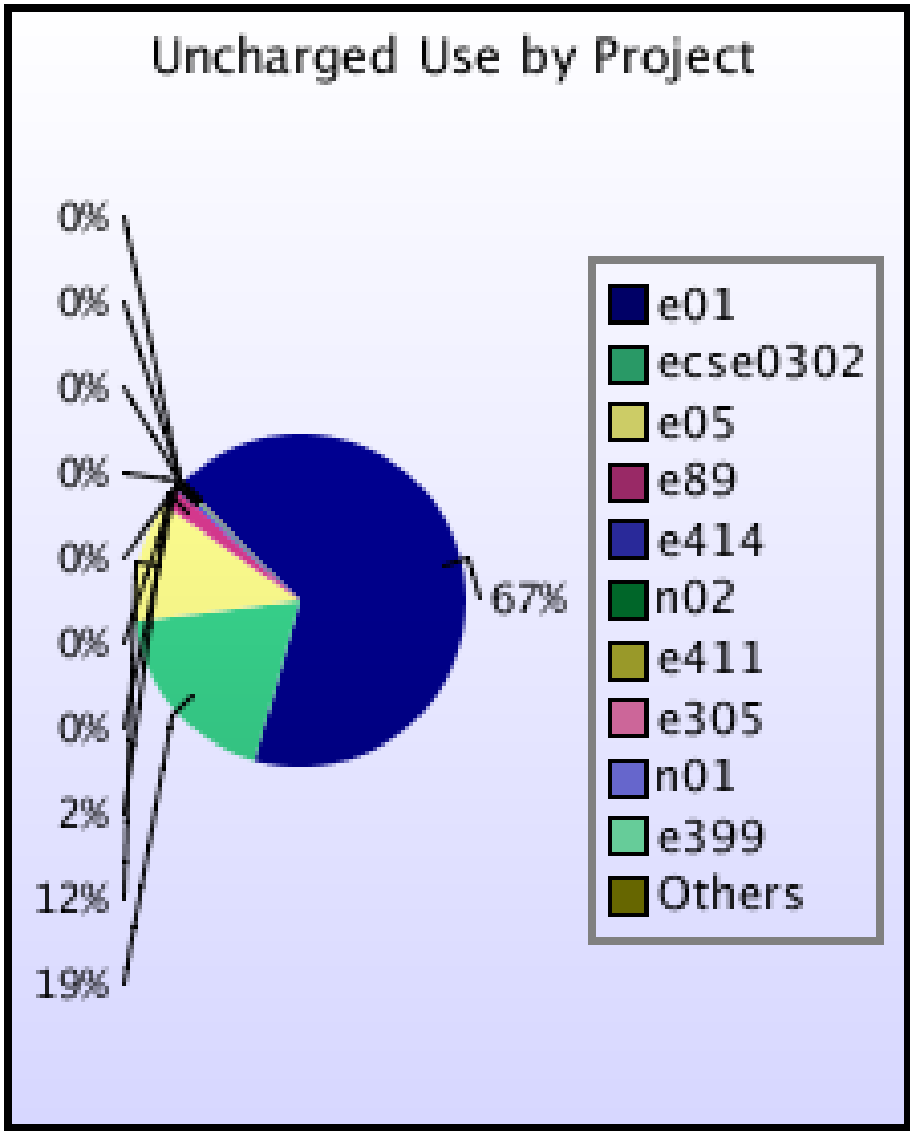
Project	Project Class	Number of Jobs	Charged kAUs	Charged Utilisation	Used kAUs	Utilisation	Allocated kAUs	Allocation
e343	Class1a	22	26.3	0.00%	26.3	0.00%	1,509.2	0.11%
e358	Class1a	52	917.7	0.07%	917.7	0.07%	748.8	0.06%
e364	Class1a	0	0.0	0.00%	0.0	0.00%	798.8	0.06%
e365	Class1a	0	0.0	0.00%	0.0	0.00%	1,429.0	0.11%
e375	Class1a	0	0.0	0.00%	0.0	0.00%	2,930.1	0.22%
e377	Class1a	0	0.0	0.00%	0.0	0.00%	1,826.5	0.14%
e378	Class1a	0	0.0	0.00%	0.0	0.00%	4,933.3	0.37%
e385	Class1a	59	9,536.6	0.72%	9,536.6	0.72%	16,488.1	1.25%
e403	Class1a	0	0.0	0.00%	0.0	0.00%	0.0	0.00%
e429	Class1a	37	1.8	0.00%	1.8	0.00%	978.0	0.07%
e418	Class1b	27	1,854.5	0.14%	1,854.5	0.14%	3,554.2	0.27%
e316	Direct Access: ARCHER RAP	0	0.0	0.00%	0.0	0.00%	555.6	0.04%
e321	Direct Access: ARCHER RAP	0	0.0	0.00%	0.0	0.00%	3,090.0	0.23%
e323	Direct Access: ARCHER RAP	0	0.0	0.00%	0.0	0.00%	1,117.8	0.08%
e338	Direct Access: ARCHER RAP	72	2,898.8	0.22%	2,898.8	0.22%	5,583.1	0.42%
e339	Direct Access: ARCHER RAP	9	5,611.6	0.43%	5,611.6	0.43%	5,109.9	0.39%
e347	Direct Access: ARCHER RAP	34	4,108.9	0.31%	4,108.9	0.31%	727.9	0.06%
e348	Direct Access: ARCHER RAP	336	4,453.2	0.34%	4,453.2	0.34%	3,912.2	0.30%
e351	Direct Access: ARCHER RAP	63	2,133.5	0.16%	2,133.6	0.16%	272.8	0.02%
e352	Direct Access: ARCHER RAP	0	0.0	0.00%	0.0	0.00%	495.0	0.04%
e355	Direct Access: ARCHER RAP	417	3,589.9	0.27%	3,589.9	0.27%	1,836.3	0.14%
e356	Direct Access: ARCHER RAP	19	1,451.9	0.11%	1,451.9	0.11%	949.9	0.07%
e360	Direct Access: ARCHER RAP	1,518	1,085.4	0.08%	1,085.4	0.08%	1,797.8	0.14%
e370	Direct Access: ARCHER RAP	149	2,861.7	0.22%	2,861.7	0.22%	2,170.4	0.16%
e371	Direct Access: ARCHER RAP	77	1,980.0	0.15%	1,980.0	0.15%	4,152.3	0.32%
e373	Direct Access: ARCHER RAP	10	1,387.0	0.11%	1,387.0	0.11%	3,129.1	0.24%
e392	Direct Access: ARCHER RAP	59	2,342.1	0.18%	2,342.1	0.18%	4,563.2	0.35%
e393	Direct Access: ARCHER RAP	0	0.0	0.00%	0.0	0.00%	2,055.7	0.16%
e394	Direct Access: ARCHER RAP	234	946.8	0.07%	946.8	0.07%	1,853.7	0.14%
e396	Direct Access: ARCHER RAP	1,393	374.4	0.03%	374.4	0.03%	2,842.1	0.22%
e397	Direct Access: ARCHER RAP	27	7,900.6	0.60%	7,900.6	0.60%	1,757.4	0.13%
e398	Direct Access: ARCHER RAP	105	12,318.3	0.93%	12,318.3	0.93%	2,527.7	0.19%
e399	Direct Access: ARCHER RAP	96	889.1	0.07%	892.6	0.07%	2,912.3	0.22%
e400	Direct Access: ARCHER RAP	0	0.0	0.00%	0.0	0.00%	1,370.5	0.10%
e402	Direct Access: ARCHER RAP	143	1,187.2	0.09%	1,187.2	0.09%	745.7	0.06%
e419	Direct Access: ARCHER RAP	0	0.0	0.00%	0.0	0.00%	2,899.1	0.22%
e420	Direct Access: ARCHER RAP	7	1,394.8	0.11%	1,394.8	0.11%	3,666.3	0.28%
e359	Instant Access	534	902.5	0.07%	902.5	0.07%	1,553.9	0.12%
e374	Instant Access	0	0.0	0.00%	0.0	0.00%	4,695.2	0.36%

Project	Project Class	Number of Jobs	Charged kAUs	Charged Utilisation	Used kAUs	Utilisation	Allocated kAUs	Allocation
e376	Instant Access	5	441.7	0.03%	441.7	0.03%	3,426.2	0.26%
e380	Instant Access	123	560.6	0.04%	560.6	0.04%	138.2	0.01%
e383	Instant Access	76	1,038.0	0.08%	1,038.0	0.08%	182.8	0.01%
e384	Instant Access	0	0.0	0.00%	0.0	0.00%	205.6	0.02%
e386	Instant Access	0	0.0	0.00%	0.0	0.00%	202.2	0.02%
e387	Instant Access	0	0.0	0.00%	0.0	0.00%	205.6	0.02%
e388	Instant Access	266	498.6	0.04%	498.6	0.04%	185.1	0.01%
e389	Instant Access	0	0.0	0.00%	0.0	0.00%	205.6	0.02%
e390	Instant Access	0	0.0	0.00%	0.0	0.00%	204.4	0.02%
e391	Instant Access	98	671.4	0.05%	671.4	0.05%	204.4	0.02%
e395	Instant Access	28	555.4	0.04%	555.4	0.04%	192.2	0.01%
e401	Instant Access	0	0.0	0.00%	0.0	0.00%	1,480.1	0.11%
e404	Instant Access	8	2,407.9	0.18%	2,407.9	0.18%	202.2	0.02%
e405	Instant Access	0	0.0	0.00%	0.0	0.00%	199.1	0.02%
e406	Instant Access	0	0.0	0.00%	0.0	0.00%	197.9	0.02%
e407	Instant Access	0	0.0	0.00%	0.0	0.00%	1,573.0	0.12%
e408	Instant Access	69	836.8	0.06%	836.9	0.06%	2,257.6	0.17%
e409	Instant Access	24	73.2	0.01%	73.2	0.01%	202.2	0.02%
e416	Instant Access	0	0.0	0.00%	0.0	0.00%	203.2	0.02%
e417	Instant Access	61	230.8	0.02%	230.8	0.02%	173.0	0.01%
e423	Instant Access	0	0.0	0.00%	0.0	0.00%	101.4	0.01%
e425	Instant Access	1	49.7	0.00%	49.7	0.00%	181.2	0.01%
e428	Instant Access	86	132.0	0.01%	132.8	0.01%	194.5	0.01%
r10	RDF: Pilot	0	0.0	0.00%	0.0	0.00%	2.8	0.00%
e415	Training	326	5,797.6	0.44%	5,797.7	0.44%	2,039.5	0.15%
e382	Service	222	1,807.4	0.14%	1,807.4	0.14%	2,740.4	0.21%
<b>EPSRC Total</b>		<b>46,746</b>	<b>836,782.1</b>	<b>63.50%</b>	<b>856,615.7</b>	<b>65.00%</b>	<b>867,539.3</b>	<b>65.83%</b>
n01	Consortia	3,197	57,651.9	4.37%	57,665.6	4.38%	63,822.7	4.84%
n02	Consortia	12,761	102,284.6	7.76%	102,113.4	7.75%	208,082.7	15.79%
n03	Consortia	2,238	39,186.0	2.97%	39,187.4	2.97%	49,175.6	3.73%
n05	Leadership Awards	25	38,417.4	2.92%	38,417.4	2.92%	16,936.0	1.29%
<b>NERC Total</b>		<b>18,221</b>	<b>237,539.9</b>	<b>18.03%</b>	<b>237,383.8</b>	<b>18.01%</b>	<b>338,017.0</b>	<b>25.65%</b>
b14	Class1a	0	0.0	0.00%	0.0	0.00%	276.9	0.02%
b16	Class1a	0	0.0	0.00%	0.0	0.00%	424.7	0.03%
e329	Class1a	8	1,773.8	0.13%	1,773.8	0.13%	379.6	0.03%
b17	Research	0	0.0	0.00%	0.0	0.00%	366.1	0.03%
<b>BBSRC Total</b>		<b>8</b>	<b>1,773.8</b>	<b>0.13%</b>	<b>1,773.8</b>	<b>0.13%</b>	<b>1,447.2</b>	<b>0.11%</b>
pr1u0905	DECI: EXEC	0	0.0	0.00%	0.0	0.00%	49.2	0.00%
pr1u1202	DECI: EXEC	316	19,516.1	1.48%	19,516.1	1.48%	5,439.2	0.41%
pr1u1204	DECI: EXEC	0	0.0	0.00%	0.0	0.00%	2,844.9	0.22%
pr1u1205	DECI: EXEC	0	0.0	0.00%	0.0	0.00%	1,603.4	0.12%
pr1u1211	DECI: EXEC	1,009	2,373.0	0.18%	2,373.0	0.18%	2,145.4	0.16%
pr1u1212	DECI: EXEC	0	0.0	0.00%	0.0	0.00%	2,021.7	0.15%
pr1u1213	DECI: EXEC	0	0.0	0.00%	0.0	0.00%	1,266.2	0.10%
pr1u1214	DECI: EXEC	0	0.0	0.00%	0.0	0.00%	463.5	0.04%
pr1u1215	DECI: EXEC	1	0.0	0.00%	0.0	0.00%	1,516.3	0.12%
pr1u1201	DECI: HOME	0	0.0	0.00%	0.0	0.00%	0.1	0.00%
pr1u1203	DECI: HOME	0	0.0	0.00%	0.0	0.00%	0.1	0.00%
pr1u1206	DECI: HOME	0	0.0	0.00%	0.0	0.00%	0.1	0.00%
pr1u1207	DECI: HOME	0	0.0	0.00%	0.0	0.00%	142.9	0.01%
pr1u1208	DECI: HOME	0	0.0	0.00%	0.0	0.00%	0.1	0.00%
pr1u1209	DECI: HOME	0	0.0	0.00%	0.0	0.00%	0.1	0.00%
pr1u1210	DECI: HOME	0	0.0	0.00%	0.0	0.00%	0.1	0.00%
<b>PRACE Total</b>		<b>1,326</b>	<b>21,889.1</b>	<b>1.66%</b>	<b>21,889.1</b>	<b>1.66%</b>	<b>17,493.2</b>	<b>1.33%</b>
ecse0101	eCSE	0	0.0	0.00%	0.0	0.00%	49.3	0.00%
ecse0102	eCSE	0	0.0	0.00%	0.0	0.00%	25.0	0.00%
ecse0103	eCSE	0	0.0	0.00%	0.0	0.00%	46.7	0.00%
ecse0105	eCSE	0	0.0	0.00%	0.0	0.00%	26.9	0.00%
ecse0110	eCSE	0	0.0	0.00%	0.0	0.00%	49.3	0.00%
ecse0119	eCSE	0	0.0	0.00%	0.0	0.00%	18.9	0.00%
ecse0202	eCSE	0	0.0	0.00%	0.0	0.00%	51.0	0.00%
ecse0203	eCSE	0	0.0	0.00%	0.0	0.00%	46.3	0.00%

Project	Project Class	Number of Jobs	Charged kAUs	Charged Utilisation	Used kAUs	Utilisation	Allocated kAUs	Allocation
ecse0206	eCSE	0	0.0	0.00%	0.0	0.00%	42.5	0.00%
ecse0211	eCSE	0	0.0	0.00%	0.0	0.00%	41.8	0.00%
ecse0213	eCSE	11	13.4	0.00%	13.4	0.00%	57.9	0.00%
ecse0217	eCSE	0	0.0	0.00%	0.0	0.00%	38.2	0.00%
ecse0301	eCSE	0	0.0	0.00%	0.0	0.00%	48.6	0.00%
ecse0302	eCSE	20	0.0	0.00%	4,562.4	0.35%	23.3	0.00%
ecse0303	eCSE	0	0.0	0.00%	0.0	0.00%	63.0	0.00%
ecse0307	eCSE	0	0.0	0.00%	0.0	0.00%	43.3	0.00%
ecse0308	eCSE	0	0.0	0.00%	0.0	0.00%	50.2	0.00%
ecse0309	eCSE	103	86.3	0.01%	86.3	0.01%	117.7	0.01%
ecse0310	eCSE	8	8.8	0.00%	8.8	0.00%	21.5	0.00%
ecse0313	eCSE	0	0.0	0.00%	0.0	0.00%	24.3	0.00%
ecse0403	eCSE	0	0.0	0.00%	0.0	0.00%	50.8	0.00%
ecse0404	eCSE	0	0.0	0.00%	0.0	0.00%	41.4	0.00%
ecse0413	eCSE	0	0.0	0.00%	0.0	0.00%	38.1	0.00%
ecse0414	eCSE	0	0.0	0.00%	0.0	0.00%	36.7	0.00%
ecsepr01	eCSE	0	0.0	0.00%	0.0	0.00%	83.8	0.01%
ecsepr02	eCSE	0	0.0	0.00%	0.0	0.00%	84.2	0.01%
ecsepr03	eCSE	0	0.0	0.00%	0.0	0.00%	83.8	0.01%
ecsepr04	eCSE	0	0.0	0.00%	0.0	0.00%	83.8	0.01%
ecsepr05	eCSE	0	0.0	0.00%	0.0	0.00%	83.8	0.01%
ecsepr06	eCSE	0	0.0	0.00%	0.0	0.00%	83.8	0.01%
ecsepr07	eCSE	0	0.0	0.00%	0.0	0.00%	83.8	0.01%
ecsepr08	eCSE	0	0.0	0.00%	0.0	0.00%	83.8	0.01%
ecsepr09	eCSE	0	0.0	0.00%	0.0	0.00%	84.5	0.01%
ecsepr10	eCSE	0	0.0	0.00%	0.0	0.00%	83.8	0.01%
ecsepr11	eCSE	0	0.0	0.00%	0.0	0.00%	84.5	0.01%
ecsepr12	eCSE	0	0.0	0.00%	0.0	0.00%	84.5	0.01%
ecsepr13	eCSE	0	0.0	0.00%	0.0	0.00%	83.8	0.01%
ecsepr14	eCSE	0	0.0	0.00%	0.0	0.00%	84.5	0.01%
ecsepr15	eCSE	0	0.0	0.00%	0.0	0.00%	83.8	0.01%
ecsepr16	eCSE	0	0.0	0.00%	0.0	0.00%	133.0	0.01%
ecseta01	eCSE	0	0.0	0.00%	0.0	0.00%	83.8	0.01%
ecseta02	eCSE	0	0.0	0.00%	0.0	0.00%	84.5	0.01%
ecseta03	eCSE	0	0.0	0.00%	0.0	0.00%	87.6	0.01%
<b>eCSE Total</b>		<b>142</b>	<b>108.5</b>	<b>0.01%</b>	<b>4,670.9</b>	<b>0.35%</b>	<b>2,701.7</b>	<b>0.21%</b>
d43	ECDF	303	3,480.7	0.26%	3,480.7	0.26%	10,490.7	0.80%
d25	Research	29	293.4	0.02%	293.4	0.02%	1,356.7	0.10%
d35	Research	49	338.7	0.03%	338.7	0.03%	225.5	0.02%
d37	Research	0	0.0	0.00%	0.0	0.00%	1,084.0	0.08%
d41	Research	0	0.0	0.00%	0.0	0.00%	417.3	0.03%
d56	Research	522	2,086.8	0.16%	2,086.8	0.16%	3,423.8	0.26%
d57	Research	0	0.0	0.00%	0.0	0.00%	31.9	0.00%
d60	Research	5	0.5	0.00%	0.5	0.00%	55.2	0.00%
d61	Research	0	0.0	0.00%	0.0	0.00%	56.8	0.00%
d62	Research	81	1.5	0.00%	1.5	0.00%	294.1	0.02%
d63	Research	184	497.3	0.04%	497.3	0.04%	318.3	0.02%
d64	Research	0	0.0	0.00%	0.0	0.00%	238.7	0.02%
d65	Research	0	0.0	0.00%	0.0	0.00%	6,365.5	0.48%
d66	Research	0	0.0	0.00%	0.0	0.00%	0.7	0.00%
d67	Research	0	0.0	0.00%	0.0	0.00%	108.1	0.01%
d69	Research	18	4.2	0.00%	4.2	0.00%	167.1	0.01%
d70	Research	0	0.0	0.00%	0.0	0.00%	72.8	0.01%
d71	Research	66	58.9	0.00%	58.9	0.00%	1,380.1	0.10%
d72	Research	51	14.3	0.00%	14.4	0.00%	625.1	0.05%
d73	Research	243	27,825.9	2.11%	27,825.9	2.11%	9,937.7	0.75%
d75	Research	0	0.0	0.00%	0.0	0.00%	89.3	0.01%
d76	Research	0	0.0	0.00%	0.0	0.00%	96.2	0.01%
d78	Research	0	0.0	0.00%	0.0	0.00%	168.0	0.01%
d79	Research	0	0.0	0.00%	0.0	0.00%	338.7	0.03%
d81	Research	0	0.0	0.00%	0.0	0.00%	244.9	0.02%
e324	Research	51	1,983.0	0.15%	1,984.2	0.15%	580.6	0.04%
i01	Industrial	0	0.0	0.00%	0.0	0.00%	37.2	0.00%

Project	Project Class	Number of Jobs	Charged kAUs	Charged Utilisation	Used kAUs	Utilisation	Allocated kAUs	Allocation
i02	Industrial	0	0.0	0.00%	0.0	0.00%	0.7	0.00%
i03	Industrial	0	0.0	0.00%	0.0	0.00%	1,785.4	0.14%
i04	Industrial	0	0.0	0.00%	0.0	0.00%	23.4	0.00%
i06	Industrial	0	0.0	0.00%	0.0	0.00%	45.2	0.00%
i10	Industrial	0	0.0	0.00%	0.0	0.00%	44.2	0.00%
i13	Industrial	0	0.0	0.00%	0.0	0.00%	1.6	0.00%
i15	Industrial	0	0.0	0.00%	0.0	0.00%	203.9	0.02%
x06	Industrial	0	0.0	0.00%	0.0	0.00%	4.6	0.00%
x08	Industrial	6	1.7	0.00%	1.7	0.00%	59.2	0.00%
d59	Training	0	0.0	0.00%	0.0	0.00%	329.1	0.02%
d68	Training	332	3,537.5	0.27%	3,537.5	0.27%	425.8	0.03%
d74	Training	0	0.0	0.00%	0.0	0.00%	73.2	0.01%
d39	Service	0	0.0	0.00%	0.0	0.00%	78.4	0.01%
d77	Service	0	0.0	0.00%	0.0	0.00%	23.8	0.00%
d80	Service	6	2.8	0.00%	2.8	0.00%	168.3	0.01%
d82	Service	0	0.0	0.00%	0.0	0.00%	933.6	0.07%
i14	Service	0	0.0	0.00%	0.0	0.00%	419.3	0.03%
y01	Service	0	0.0	0.00%	0.0	0.00%	75.1	0.01%
y02	Service	9	3.9	0.00%	3.9	0.00%	522.8	0.04%
y07	Service	9	5.4	0.00%	5.4	0.00%	48.6	0.00%
z02	Service	2	0.2	0.00%	0.2	0.00%	247.6	0.02%
z99	Service	30	0.7	0.00%	0.7	0.00%	6.1	0.00%
d84	UoE Seedcorn	0	0.0	0.00%	0.0	0.00%	134.6	0.01%
d83	UoE Supercomputing	0	0.0	0.00%	0.0	0.00%	9,462.2	0.72%
DirectorsTime Total		1,996	40,137.3	3.05%	40,138.6	3.05%	53,321.7	4.05%
y14	Training	1,276	1,045.6	0.08%	711.3	0.05%	237.0	0.02%
z01	Service	168	279.4	0.02%	279.4	0.02%	7,312.8	0.55%
CSE Total		1,444	1,325.0	0.10%	990.7	0.08%	7,549.8	0.57%
i18	Industrial	0	0.0	0.00%	0.0	0.00%	1,463.7	0.11%
Industrial Total		0	0.0	0.00%	0.0	0.00%	1,463.7	0.11%
w03	Service	20	56.3	0.00%	56.3	0.00%	47.4	0.00%
y21	Service	9	1.6	0.00%	1.6	0.00%	168.4	0.01%
z14	Service	0	0.0	0.00%	0.0	0.00%	202.6	0.02%
Internal Total		29	57.9	0.00%	57.9	0.00%	418.4	0.03%
Total		69,912	1,139,613.7	86.48%	1,163,520.6	88.29%	1,289,952.0	97.89%

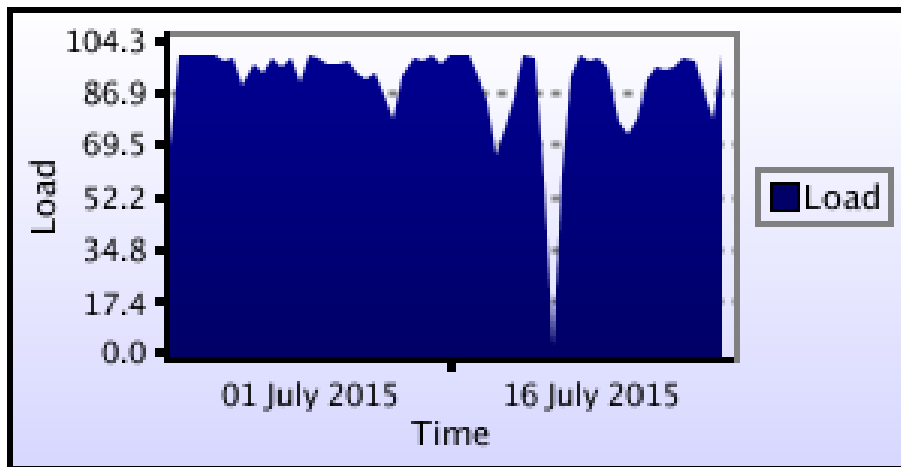




## kAUs (by Size)

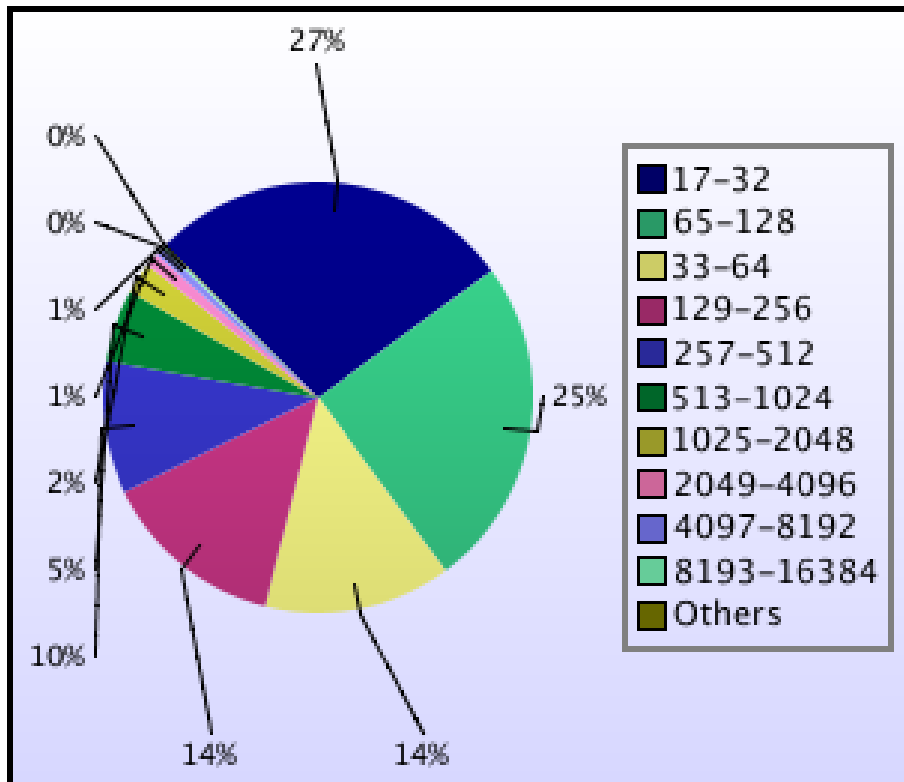
Size	kAUs	Number of Jobs
17-32	19,343.596	19,201
33-64	18,690.891	9,847
65-128	91,262.096	17,400
129-256	140,430.207	9,637
257-512	193,492.441	6,995
513-1024	189,589.607	3,809
1025-2048	163,727.657	1,643
2049-4096	115,329.635	724
4097-8192	117,255.253	446
8193-16384	80,481.9	145
16385-32768	4,790.147	52
32769-65536	1,617.693	3
65537-131072	1,951.846	1

## Load plots

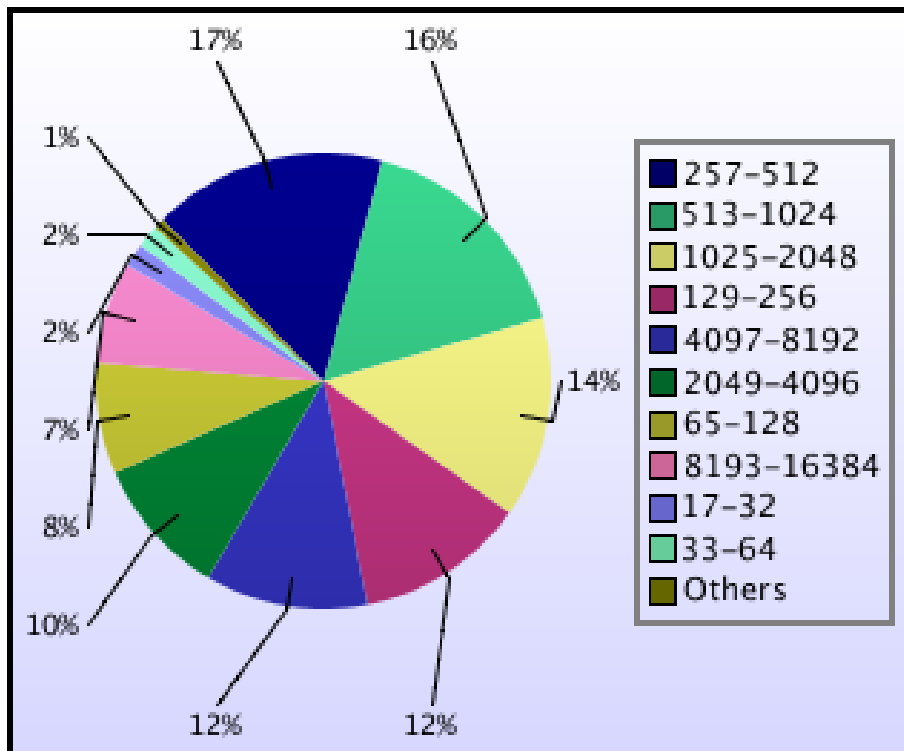


Percentage load on machine

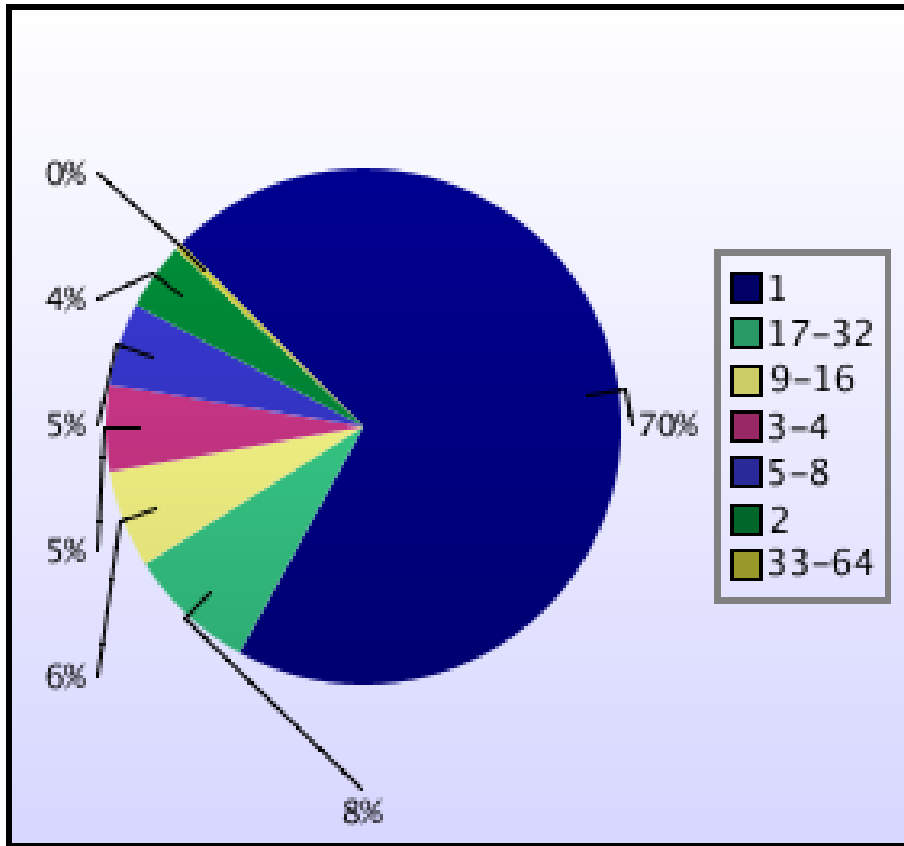




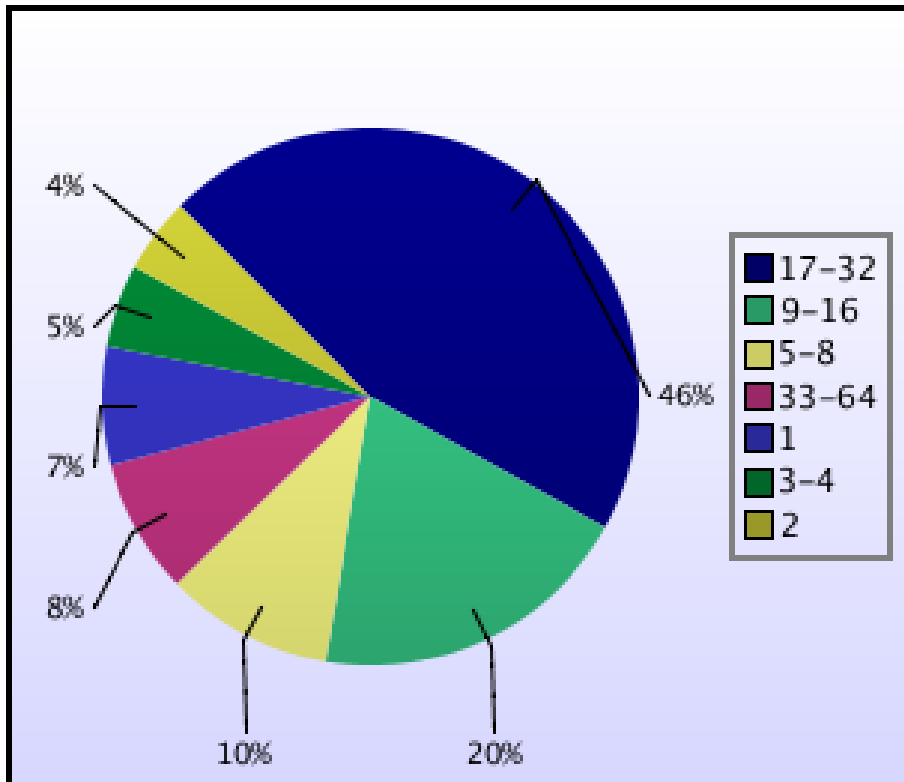
Jobs by Size



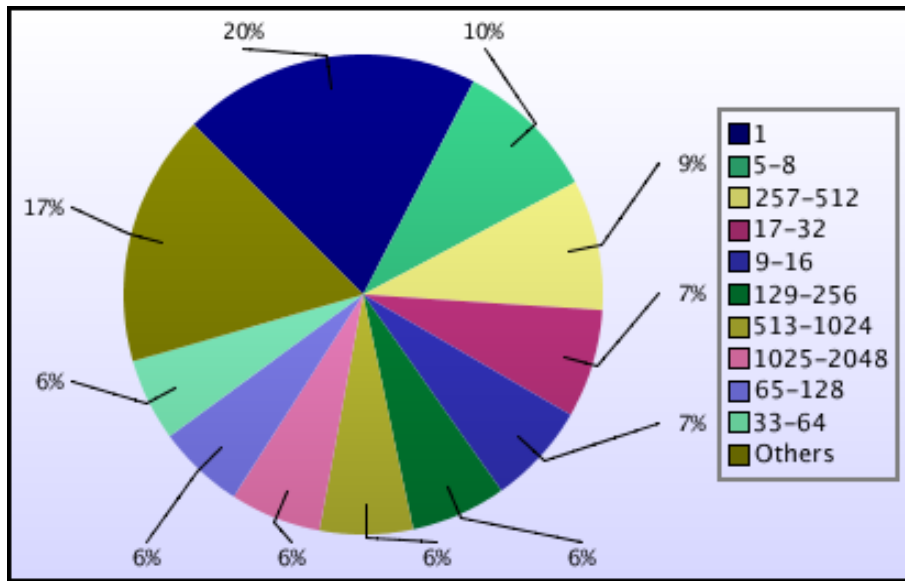
kAUs used by Size



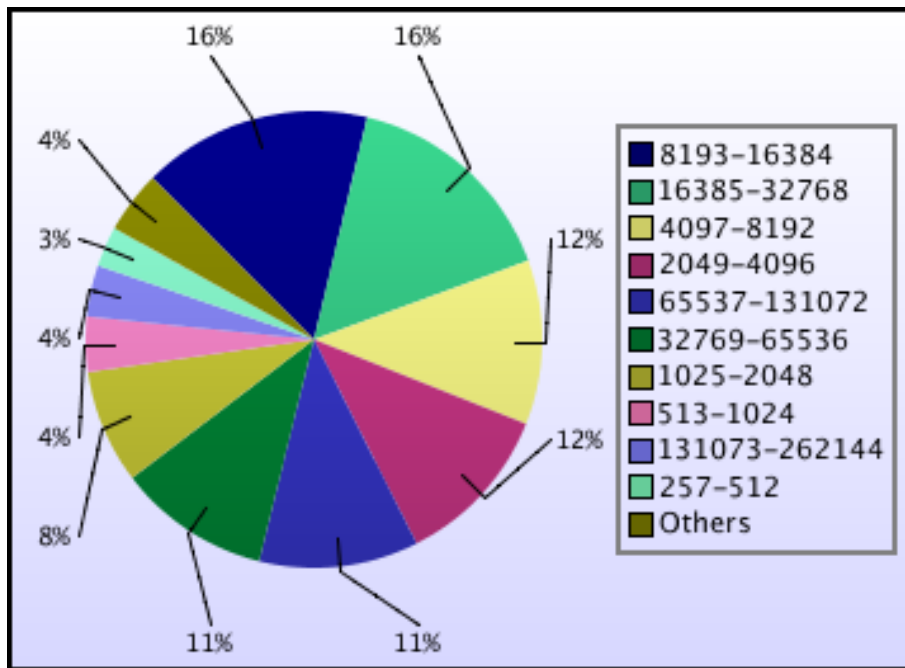
Jobs grouped by wall-clock-hours



kAUs used grouped by wall-clock-hours



Jobs grouped by core-hours

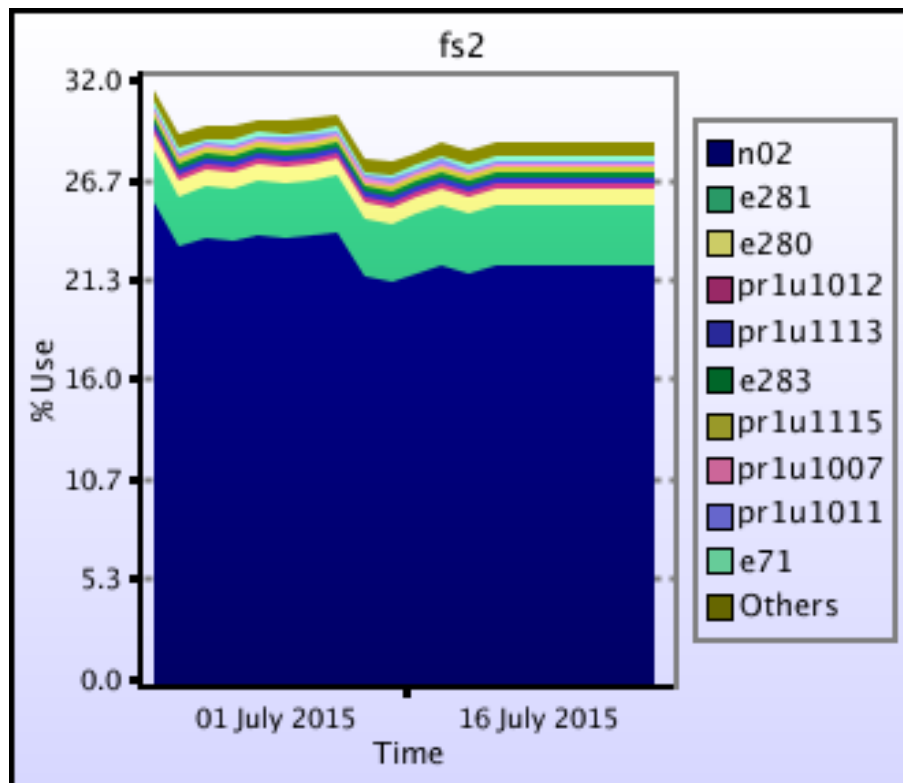


kAUs used grouped by core-hours

## Disk usage

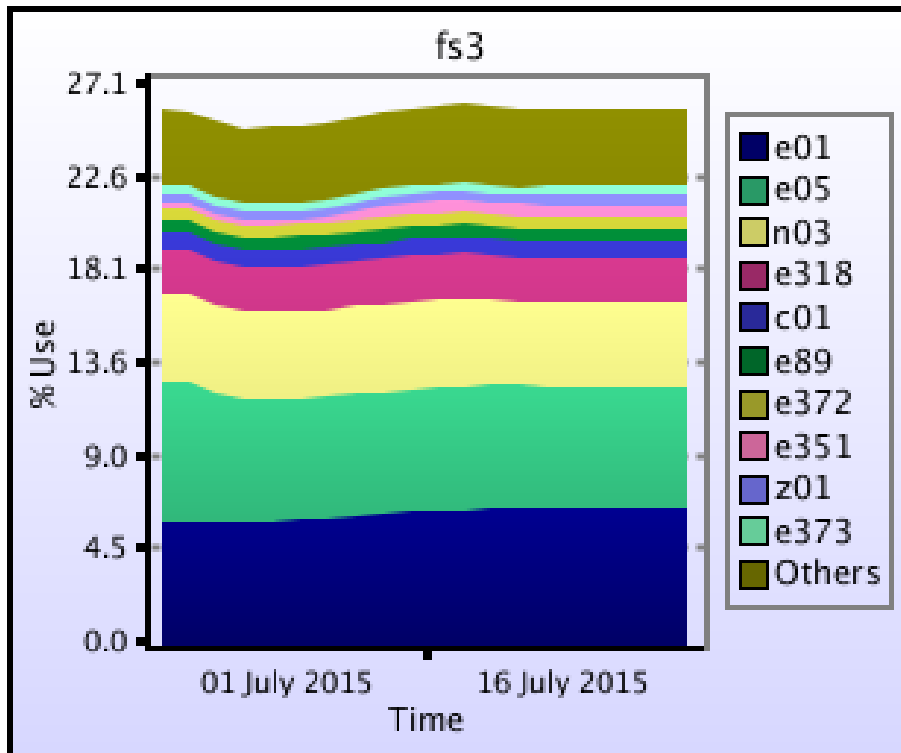
### Disk usage for work (fs2)

This is a plot of Disk Use on fs2 against time. The plot is divided into a number of classes according to Project. This is a stacked plot so the top of the plot represents the total usage at a given time.



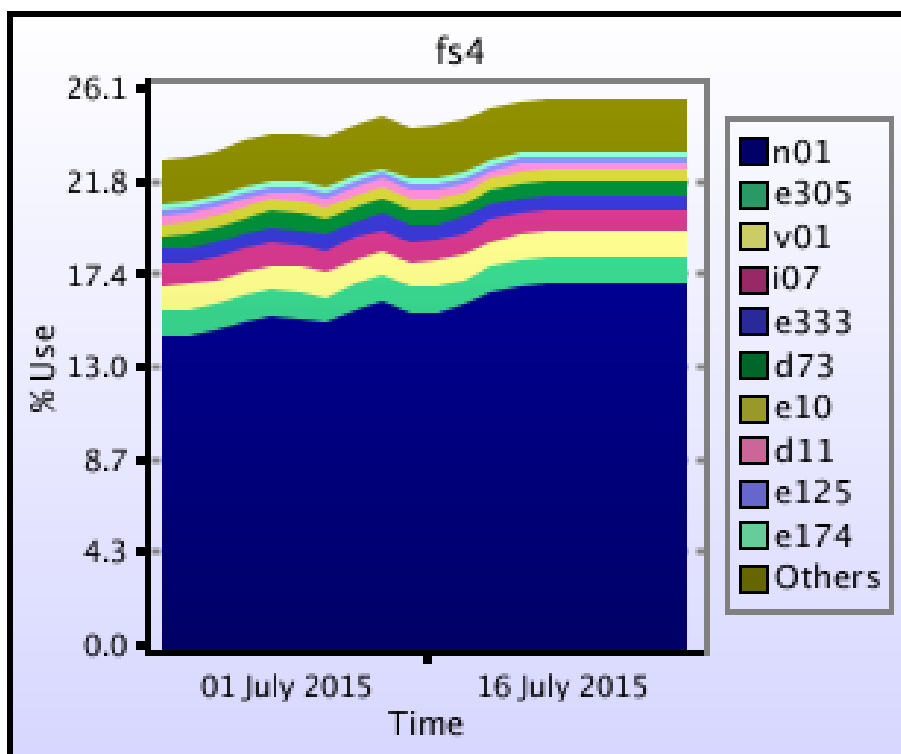
### Disk usage for work (fs3)

This is a plot of Disk Use on fs3 against time. The plot is divided into a number of classes according to Project. This is a stacked plot so the top of the plot represents the total usage at a given time.



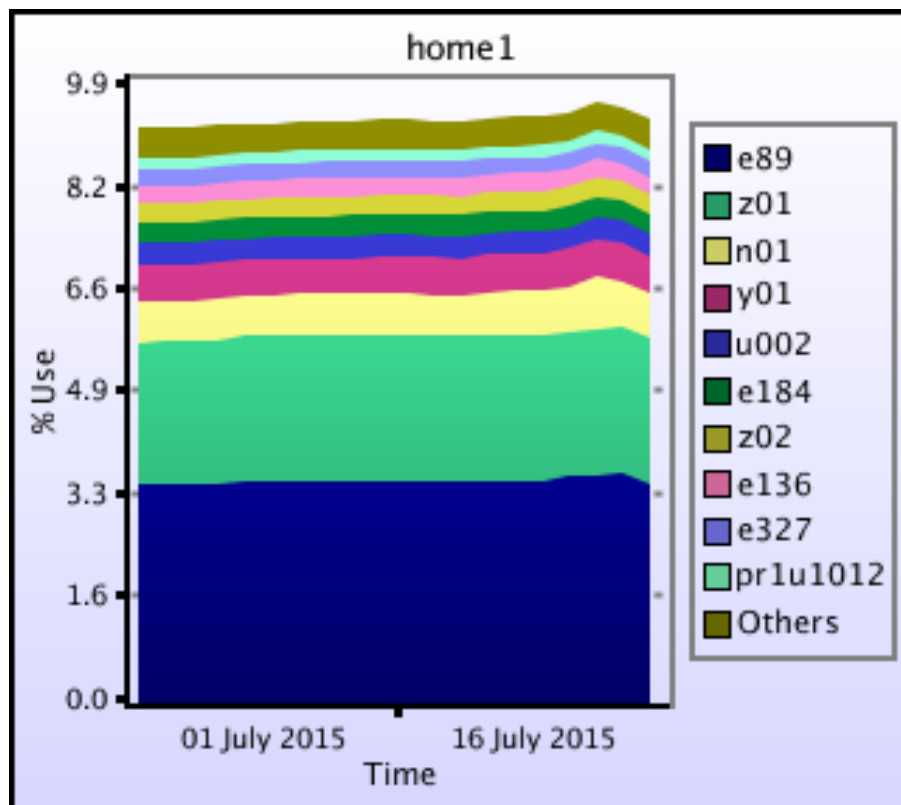
### Disk usage for work (fs4)

This is a plot of Disk Use on fs4 against time. The plot is divided into a number of classes according to Project. This is a stacked plot so the top of the plot represents the total usage at a given time.



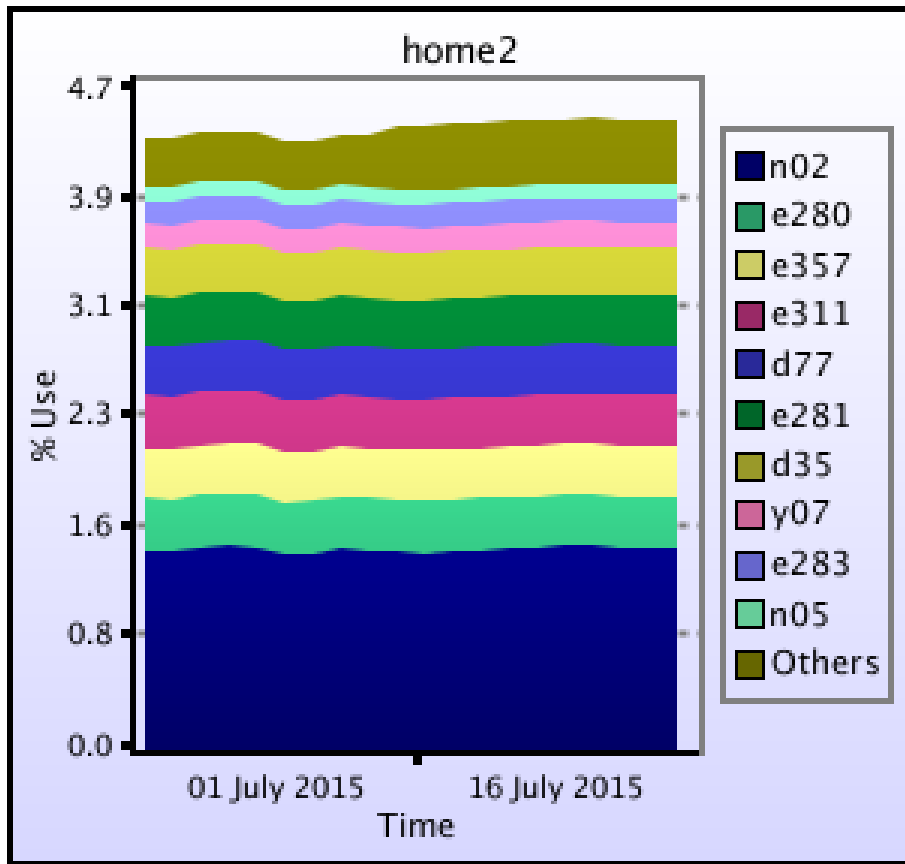
## Disk usage for home (home1)

This is a plot of Disk Use on home1 against time. The plot is divided into a number of classes according to Project. This is a stacked plot so the top of the plot represents the total usage at a given time.



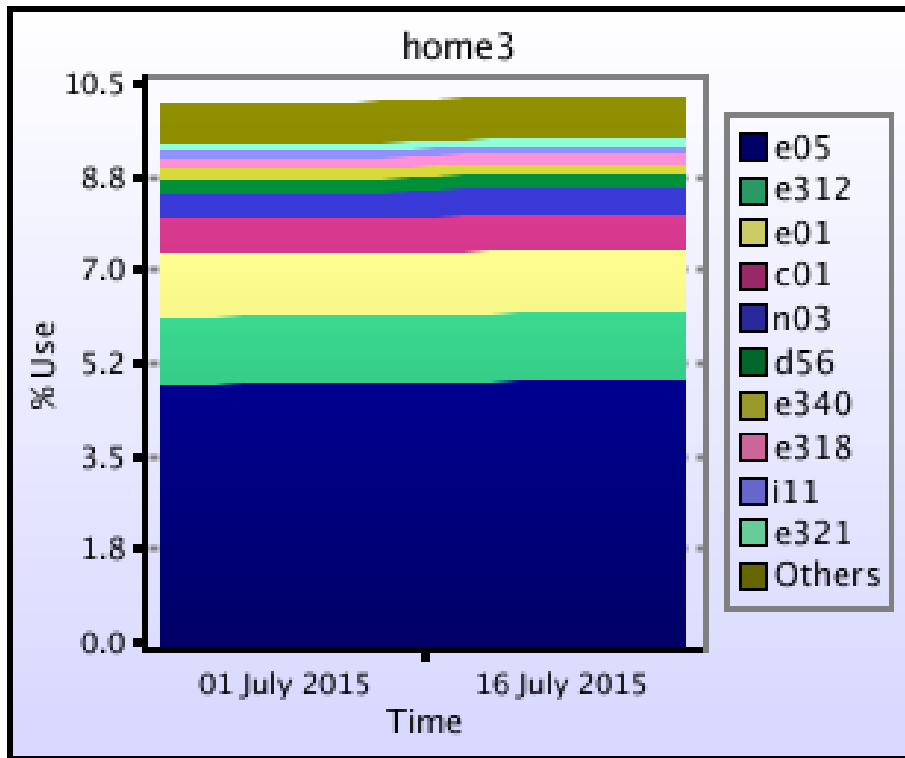
## Disk usage for home (home2)

This is a plot of Disk Use on home2 against time. The plot is divided into a number of classes according to Project. This is a stacked plot so the top of the plot represents the total usage at a given time.



### Disk usage for home (home3)

This is a plot of Disk Use on home3 against time. The plot is divided into a number of classes according to Project. This is a stacked plot so the top of the plot represents the total usage at a given time.



### Disk usage for home (home4)

This is a plot of Disk Use on home4 against time. The plot is divided into a number of classes according to Project. This is a stacked plot so the top of the plot represents the total usage at a given time.

