

Monthly Reporting

Report from 01 April 2015 to 30 June 2015

Report for Resource Pool XC on ARCHER

A total of 3,868,300.79 kAU were available during this period.

Use and Allocations (by Project)

In the following table, Charged refers to usage which was charged against the project Allocation; whereas Used refers to usage including uncharged time. Uncharged time can arise from use of the Low Priority queue and/or during times when charging is disabled on the service.

The (Allocation) column is the time allocated to the project, scaled according to the reporting period and shown as a fraction of the available resources. If this report period is a sub-period of the Allocation period then the SAFE calculates the Allocation for this sub-period based on a linear spend profile of the total Allocation. If the usage for a project is not linear across the full Allocation period the the Use can be larger than the extrapolated Allocation.

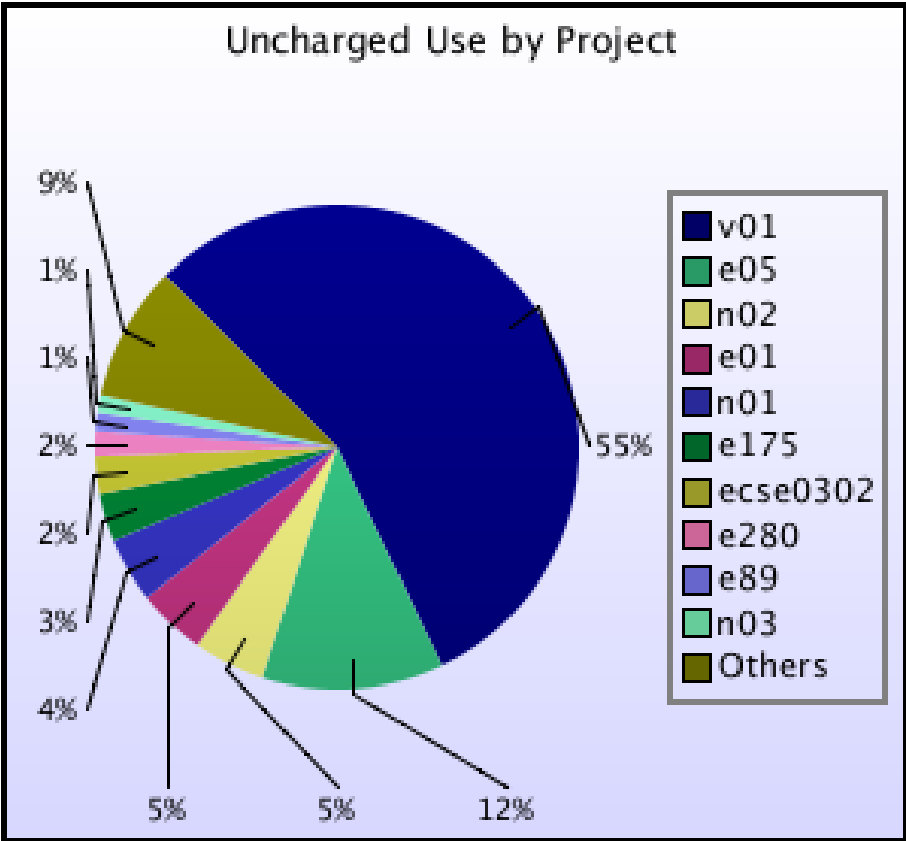
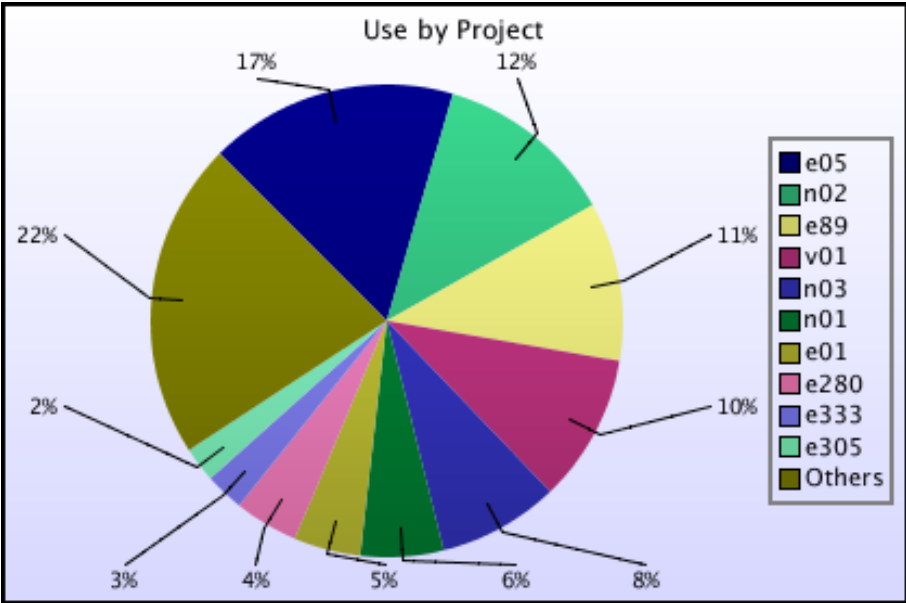
Project	Project Class	Number of Jobs	Charged kAUs	Charged Utilisation	Used kAUs	Utilisation	Allocated kAUs	Allocation
e01	Consortia	2,498	126,069.7	3.26%	154,069.5	3.98%	274,214.2	7.09%
e05	Consortia	40,844	498,829.0	12.90%	573,528.6	14.83%	530,580.3	13.72%
e89	Consortia	28,371	358,718.1	9.27%	366,462.1	9.47%	468,522.5	12.11%
e280	Consortia	20,928	137,323.8	3.55%	147,544.6	3.81%	159,094.5	4.11%
e281	Consortia	1,538	44,539.4	1.15%	45,909.9	1.19%	80,450.8	2.08%
e283	Consortia	888	28,157.8	0.73%	28,831.6	0.75%	64,059.6	1.66%
e305	Consortia	1,966	74,888.3	1.94%	80,744.4	2.09%	87,305.3	2.26%
e410	Leadership Awards	146	6,044.0	0.16%	6,044.0	0.16%	19,829.6	0.51%
e411	Leadership Awards	2,018	11,626.4	0.30%	11,993.2	0.31%	21,034.5	0.54%
e412	Leadership Awards	478	9,602.0	0.25%	9,912.5	0.26%	10,404.8	0.27%
e413	Leadership Awards	217	1,021.0	0.03%	1,021.0	0.03%	20,396.2	0.53%
e414	Leadership Awards	167	20,390.3	0.53%	23,786.1	0.61%	25,967.2	0.67%
e421	Leadership Awards	0	0.0	0.00%	0.0	0.00%	11,728.6	0.30%
e422	Leadership Awards	0	0.0	0.00%	0.0	0.00%	3,743.1	0.10%
e424	Leadership Awards	0	0.0	0.00%	0.0	0.00%	6,184.7	0.16%
c01	Class1a	373	379.1	0.01%	379.2	0.01%	5,216.1	0.13%
e10	Class1a	116	2,772.0	0.07%	2,843.9	0.07%	18,353.7	0.47%
e71	Class1a	342	6,443.6	0.17%	6,444.6	0.17%	7,550.4	0.20%
e110	Class1a	193	23,797.0	0.62%	29,992.2	0.78%	12,938.4	0.33%
e125	Class1a	403	30,216.9	0.78%	30,961.5	0.80%	12,448.6	0.32%
e174	Class1a	329	3,484.2	0.09%	4,098.4	0.11%	14,773.1	0.38%
e175	Class1a	304	573.8	0.01%	20,330.7	0.53%	3,475.5	0.09%
e179	Class1a	113	3,752.3	0.10%	5,942.2	0.15%	9,749.1	0.25%
e182	Class1a	0	0.0	0.00%	0.0	0.00%	1,047.2	0.03%
e184	Class1a	624	11,490.0	0.30%	14,013.2	0.36%	8,674.1	0.22%
e191	Class1a	71	1,865.1	0.05%	1,932.7	0.05%	3,670.3	0.09%
e202	Class1a	352	31,554.3	0.82%	31,563.4	0.82%	75,793.1	1.96%
e220	Class1a	131	1,191.8	0.03%	1,191.8	0.03%	1,208.9	0.03%
e228	Class1a	24	900.1	0.02%	900.1	0.02%	1,450.5	0.04%
e229	Class1a	173	3,921.3	0.10%	4,056.3	0.10%	1,360.9	0.04%
e266	Class1a	494	3,550.0	0.09%	3,560.2	0.09%	20,974.0	0.54%
e268	Class1a	0	0.0	0.00%	0.0	0.00%	1,393.7	0.04%
e272	Class1a	1,192	9,882.6	0.26%	11,474.3	0.30%	5,967.2	0.15%
e282	Class1a	498	1,422.0	0.04%	2,598.5	0.07%	2,227.6	0.06%
e290	Class1a	445	80.6	0.00%	76.8	0.00%	333.2	0.01%
e291	Class1a	0	0.0	0.00%	0.0	0.00%	2,258.5	0.06%

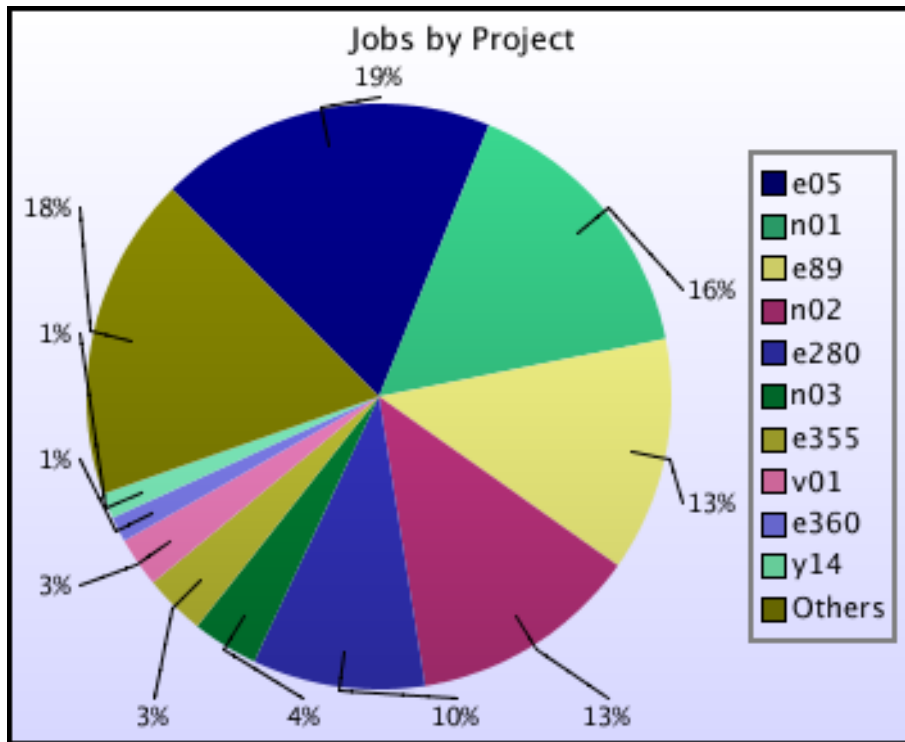
Project	Project Class	Number of Jobs	Charged kAUs	Charged Utilisation	Used kAUs	Utilisation	Allocated kAUs	Allocation
e300	Class1a	101	3,842.7	0.10%	4,605.1	0.12%	2,232.7	0.06%
e301	Class1a	191	10,667.4	0.28%	11,363.9	0.29%	6,001.1	0.16%
e304	Class1a	828	2,576.1	0.07%	2,605.2	0.07%	18,842.9	0.49%
e320	Class1a	0	0.0	0.00%	0.0	0.00%	6,431.9	0.17%
e330	Class1a	0	0.0	0.00%	0.0	0.00%	506.9	0.01%
e331	Class1a	878	1,570.3	0.04%	1,570.3	0.04%	4,145.3	0.11%
e332	Class1a	0	0.0	0.00%	0.0	0.00%	1,973.6	0.05%
e333	Class1a	538	86,982.4	2.25%	89,716.6	2.32%	13,172.6	0.34%
e336	Class1a	4	0.2	0.00%	0.2	0.00%	528.5	0.01%
e342	Class1a	0	0.0	0.00%	0.0	0.00%	1,555.4	0.04%
e343	Class1a	684	1,806.5	0.05%	2,223.3	0.06%	4,430.3	0.11%
e358	Class1a	55	192.9	0.00%	192.9	0.00%	2,198.1	0.06%
e364	Class1a	0	0.0	0.00%	0.0	0.00%	2,344.9	0.06%
e365	Class1a	0	0.0	0.00%	0.0	0.00%	4,194.7	0.11%
e375	Class1a	0	0.0	0.00%	0.0	0.00%	8,601.4	0.22%
e377	Class1a	0	0.0	0.00%	0.0	0.00%	5,361.8	0.14%
e378	Class1a	0	0.0	0.00%	0.0	0.00%	14,481.5	0.37%
e385	Class1a	346	33,034.2	0.85%	33,814.9	0.87%	48,400.5	1.25%
e403	Class1a	0	0.0	0.00%	0.0	0.00%	0.0	0.00%
e313	Direct Access: ARCHER RAP	59	5,980.1	0.15%	9,698.0	0.25%	2,337.6	0.06%
e316	Direct Access: ARCHER RAP	0	0.0	0.00%	0.0	0.00%	1,630.9	0.04%
e321	Direct Access: ARCHER RAP	44	6,277.1	0.16%	6,277.1	0.16%	383.6	0.01%
e338	Direct Access: ARCHER RAP	121	3,712.8	0.10%	3,757.7	0.10%	16,389.0	0.42%
e339	Direct Access: ARCHER RAP	276	11,799.1	0.31%	11,843.4	0.31%	12,786.9	0.33%
e347	Direct Access: ARCHER RAP	177	2,805.3	0.07%	2,805.3	0.07%	2,136.7	0.06%
e348	Direct Access: ARCHER RAP	395	2,291.2	0.06%	2,291.2	0.06%	11,484.2	0.30%
e351	Direct Access: ARCHER RAP	23	173.9	0.00%	173.9	0.00%	1,655.2	0.04%
e352	Direct Access: ARCHER RAP	638	11,232.3	0.29%	13,421.8	0.35%	4,504.3	0.12%
e354	Direct Access: ARCHER RAP	0	0.0	0.00%	0.0	0.00%	2,979.1	0.08%
e355	Direct Access: ARCHER RAP	7,417	4,544.3	0.12%	4,700.4	0.12%	7,265.5	0.19%
e356	Direct Access: ARCHER RAP	25	2,043.8	0.05%	2,069.5	0.05%	2,788.4	0.07%
e360	Direct Access: ARCHER RAP	3,103	7,466.9	0.19%	8,695.9	0.22%	5,277.5	0.14%
e370	Direct Access: ARCHER RAP	386	5,948.5	0.15%	6,225.5	0.16%	6,222.3	0.16%
e371	Direct Access: ARCHER RAP	481	4,816.6	0.12%	4,816.6	0.12%	9,130.0	0.24%
e372	Direct Access: ARCHER RAP	8	7,210.9	0.19%	7,210.9	0.19%	4,010.0	0.10%
e373	Direct Access: ARCHER RAP	33	965.9	0.02%	965.9	0.02%	7,316.2	0.19%
e392	Direct Access: ARCHER RAP	565	24,690.7	0.64%	25,834.5	0.67%	13,395.1	0.35%
e393	Direct Access: ARCHER RAP	0	0.0	0.00%	0.0	0.00%	6,034.5	0.16%
e394	Direct Access: ARCHER RAP	2,781	1,064.7	0.03%	1,064.7	0.03%	5,441.4	0.14%
e396	Direct Access: ARCHER RAP	830	804.8	0.02%	806.0	0.02%	8,342.9	0.22%
e397	Direct Access: ARCHER RAP	84	3,129.2	0.08%	3,511.2	0.09%	5,158.7	0.13%

Project	Project Class	Number of Jobs	Charged kAUs	Charged Utilisation	Used kAUs	Utilisation	Allocated kAUs	Allocation
e398	Direct Access: ARCHER RAP	130	1,222.8	0.03%	1,222.8	0.03%	7,420.2	0.19%
e399	Direct Access: ARCHER RAP	233	6,160.6	0.16%	6,355.7	0.16%	8,548.9	0.22%
e400	Direct Access: ARCHER RAP	25	119.8	0.00%	119.8	0.00%	4,023.0	0.10%
e402	Direct Access: ARCHER RAP	91	9.4	0.00%	9.4	0.00%	2,189.1	0.06%
e418	Direct Access: ARCHER RAP	67	5,474.6	0.14%	5,474.6	0.14%	2,178.4	0.06%
e420	Direct Access: ARCHER RAP	48	755.0	0.02%	755.0	0.02%	2,483.6	0.06%
e359	Instant Access	2,304	4,469.1	0.12%	4,469.1	0.12%	4,561.5	0.12%
e368	Instant Access	0	0.0	0.00%	0.0	0.00%	186.1	0.00%
e369	Instant Access	0	0.0	0.00%	0.0	0.00%	169.8	0.00%
e374	Instant Access	44	16,002.8	0.41%	16,002.8	0.41%	13,782.6	0.36%
e376	Instant Access	129	1,990.5	0.05%	2,344.3	0.06%	4,986.3	0.13%
e379	Instant Access	263	1,192.6	0.03%	1,192.7	0.03%	402.3	0.01%
e380	Instant Access	78	92.3	0.00%	92.3	0.00%	405.7	0.01%
e381	Instant Access	13	1,145.9	0.03%	1,145.9	0.03%	600.1	0.02%
e383	Instant Access	51	413.1	0.01%	413.1	0.01%	554.4	0.01%
e384	Instant Access	0	0.0	0.00%	0.0	0.00%	603.5	0.02%
e386	Instant Access	82	1,211.3	0.03%	1,356.8	0.04%	593.6	0.02%
e387	Instant Access	1	0.0	0.00%	0.0	0.00%	603.5	0.02%
e388	Instant Access	18	36.9	0.00%	36.9	0.00%	543.4	0.01%
e389	Instant Access	20	34.3	0.00%	35.4	0.00%	603.5	0.02%
e390	Instant Access	0	0.0	0.00%	0.0	0.00%	600.1	0.02%
e391	Instant Access	94	413.4	0.01%	414.3	0.01%	600.1	0.02%
e395	Instant Access	17	447.1	0.01%	447.1	0.01%	564.2	0.01%
e401	Instant Access	31	7,956.6	0.21%	7,958.5	0.21%	4,344.9	0.11%
e404	Instant Access	0	0.0	0.00%	0.0	0.00%	593.6	0.02%
e405	Instant Access	24	0.3	0.00%	0.5	0.00%	584.3	0.02%
e406	Instant Access	67	434.4	0.01%	453.7	0.01%	581.0	0.02%
e407	Instant Access	19	12.3	0.00%	12.3	0.00%	4,566.8	0.12%
e408	Instant Access	114	1,174.8	0.03%	1,318.6	0.03%	6,554.4	0.17%
e409	Instant Access	3	0.1	0.00%	0.1	0.00%	587.0	0.02%
e416	Instant Access	0	0.0	0.00%	0.0	0.00%	196.7	0.01%
e417	Instant Access	146	909.2	0.02%	917.3	0.02%	312.5	0.01%
e423	Instant Access	30	21.8	0.00%	21.8	0.00%	52.3	0.00%
e425	Instant Access	9	670.7	0.02%	670.7	0.02%	81.9	0.00%
e428	Instant Access	0	0.0	0.00%	0.0	0.00%	43.9	0.00%
r10	RDF: Pilot	0	0.0	0.00%	0.0	0.00%	8.3	0.00%
e415	Training	49	787.3	0.02%	787.6	0.02%	4,374.3	0.11%
e382	Service	1,161	5,001.0	0.13%	6,308.2	0.16%	8,044.5	0.21%
EPSRC Total		132,668	1,760,277.2	45.51%	1,944,806.6	50.28%	2,364,584.3	61.13%
n01	Consortia	34,444	164,854.4	4.26%	191,456.0	4.95%	198,141.7	5.12%
n02	Consortia	27,815	387,367.2	10.01%	416,276.4	10.76%	562,997.5	14.55%
n03	Consortia	8,001	271,771.9	7.03%	279,179.9	7.22%	156,220.7	4.04%
n05	Leadership Awards	13	5,764.9	0.15%	5,765.0	0.15%	18,491.2	0.48%
NERC Total		70,273	829,758.3	21.45%	892,677.3	23.08%	935,851.0	24.19%
b14	Class1a	0	0.0	0.00%	0.0	0.00%	812.8	0.02%
b16	Class1a	17	464.0	0.01%	1,310.4	0.03%	862.9	0.02%
e329	Class1a	12	619.1	0.02%	619.1	0.02%	1,114.3	0.03%
b17	Research	0	0.0	0.00%	0.0	0.00%	82.7	0.00%
BBSRC Total		29	1,083.0	0.03%	1,929.5	0.05%	2,872.6	0.07%
pr1u0905	DECI: EXEC	0	0.0	0.00%	0.0	0.00%	481.5	0.01%
pr1u1103	DECI: EXEC	239	28,582.5	0.74%	30,247.5	0.78%	6,835.3	0.18%
pr1u1113	DECI: EXEC	9	2,256.2	0.06%	2,258.9	0.06%	7,346.9	0.19%
pr1u1114	DECI: EXEC	7	25.6	0.00%	25.6	0.00%	636.9	0.02%
pr1u1202	DECI: EXEC	256	15,740.8	0.41%	17,529.0	0.45%	15,966.7	0.41%
pr1u1204	DECI: EXEC	0	0.0	0.00%	0.0	0.00%	7,847.1	0.20%
pr1u1205	DECI: EXEC	28	20,650.5	0.53%	23,742.8	0.61%	4,706.9	0.12%
pr1u1211	DECI: EXEC	1,246	8,362.5	0.22%	8,609.0	0.22%	6,507.6	0.17%

Project	Project Class	Number of Jobs	Charged kAUs	Charged Utilisation	Used kAUs	Utilisation	Allocated kAUs	Allocation
pr1u1212	DECI: EXEC	361	28,490.2	0.74%	28,824.1	0.75%	5,934.8	0.15%
pr1u1213	DECI: EXEC	0	0.0	0.00%	0.0	0.00%	3,717.0	0.10%
pr1u1214	DECI: EXEC	202	3,929.1	0.10%	4,394.5	0.11%	1,360.4	0.04%
pr1u1215	DECI: EXEC	32	105.0	0.00%	105.0	0.00%	4,451.1	0.12%
pr1u1201	DECI: HOME	0	0.0	0.00%	0.0	0.00%	0.2	0.00%
pr1u1203	DECI: HOME	0	0.0	0.00%	0.0	0.00%	0.2	0.00%
pr1u1206	DECI: HOME	0	0.0	0.00%	0.0	0.00%	0.2	0.00%
pr1u1207	DECI: HOME	0	0.0	0.00%	0.0	0.00%	419.4	0.01%
pr1u1208	DECI: HOME	0	0.0	0.00%	0.0	0.00%	0.2	0.00%
pr1u1209	DECI: HOME	0	0.0	0.00%	0.0	0.00%	0.2	0.00%
pr1u1210	DECI: HOME	0	0.0	0.00%	0.0	0.00%	0.2	0.00%
PRACE Total		2,380	108,142.5	2.80%	115,736.4	2.99%	66,212.7	1.71%
ecse0101	eCSE	0	0.0	0.00%	0.0	0.00%	92.5	0.00%
ecse0102	eCSE	0	0.0	0.00%	0.0	0.00%	73.5	0.00%
ecse0103	eCSE	0	0.0	0.00%	0.0	0.00%	137.2	0.00%
ecse0105	eCSE	0	0.0	0.00%	0.0	0.00%	78.9	0.00%
ecse0110	eCSE	0	0.0	0.00%	0.0	0.00%	92.5	0.00%
ecse0113	eCSE	22	107.1	0.00%	119.0	0.00%	152.0	0.00%
ecse0115	eCSE	6	22.1	0.00%	22.1	0.00%	111.9	0.00%
ecse0117	eCSE	13	0.5	0.00%	1.0	0.00%	173.3	0.00%
ecse0118	eCSE	16	23.9	0.00%	135.5	0.00%	128.4	0.00%
ecse0119	eCSE	0	0.0	0.00%	0.0	0.00%	55.6	0.00%
ecse0202	eCSE	19	0.5	0.00%	0.9	0.00%	149.6	0.00%
ecse0203	eCSE	0	0.0	0.00%	0.0	0.00%	135.8	0.00%
ecse0206	eCSE	2	0.0	0.00%	0.1	0.00%	124.9	0.00%
ecse0208	eCSE	0	0.0	0.00%	0.0	0.00%	134.4	0.00%
ecse0209	eCSE	0	0.0	0.00%	0.0	0.00%	123.0	0.00%
ecse0211	eCSE	0	0.0	0.00%	0.0	0.00%	122.7	0.00%
ecse0213	eCSE	48	254.0	0.01%	254.0	0.01%	170.1	0.00%
ecse0215	eCSE	26	146.7	0.00%	146.7	0.00%	115.2	0.00%
ecse0217	eCSE	1	0.4	0.00%	0.4	0.00%	112.2	0.00%
ecse0301	eCSE	6	0.0	0.00%	0.1	0.00%	142.6	0.00%
ecse0302	eCSE	50	0.0	0.00%	15,200.6	0.39%	68.4	0.00%
ecse0303	eCSE	60	216.6	0.01%	216.6	0.01%	185.0	0.00%
ecse0307	eCSE	0	0.0	0.00%	0.0	0.00%	127.0	0.00%
ecse0308	eCSE	10	0.7	0.00%	0.7	0.00%	84.9	0.00%
ecse0309	eCSE	9	3.3	0.00%	3.8	0.00%	345.4	0.01%
ecse0310	eCSE	51	94.2	0.00%	94.2	0.00%	63.1	0.00%
ecse0313	eCSE	0	0.0	0.00%	0.0	0.00%	71.5	0.00%
ecse0404	eCSE	0	0.0	0.00%	0.0	0.00%	110.9	0.00%
ecse0414	eCSE	7	15.1	0.00%	15.1	0.00%	66.4	0.00%
ecsepr01	eCSE	0	0.0	0.00%	0.0	0.00%	245.9	0.01%
ecsepr02	eCSE	1	0.6	0.00%	0.6	0.00%	247.3	0.01%
ecsepr03	eCSE	0	0.0	0.00%	0.0	0.00%	245.9	0.01%
ecsepr04	eCSE	0	0.0	0.00%	0.0	0.00%	245.9	0.01%
ecsepr05	eCSE	0	0.0	0.00%	0.0	0.00%	245.9	0.01%
ecsepr06	eCSE	0	0.0	0.00%	0.0	0.00%	245.9	0.01%
ecsepr07	eCSE	0	0.0	0.00%	0.0	0.00%	245.9	0.01%
ecsepr08	eCSE	0	0.0	0.00%	0.0	0.00%	245.9	0.01%
ecsepr09	eCSE	0	0.0	0.00%	0.0	0.00%	248.0	0.01%
ecsepr10	eCSE	0	0.0	0.00%	0.0	0.00%	245.9	0.01%
ecsepr11	eCSE	0	0.0	0.00%	0.0	0.00%	248.0	0.01%
ecsepr12	eCSE	0	0.0	0.00%	0.0	0.00%	248.0	0.01%
ecsepr13	eCSE	0	0.0	0.00%	0.0	0.00%	245.9	0.01%
ecsepr14	eCSE	0	0.0	0.00%	0.0	0.00%	248.0	0.01%
ecsepr15	eCSE	60	317.2	0.01%	317.2	0.01%	245.9	0.01%
ecsepr16	eCSE	0	0.0	0.00%	0.0	0.00%	390.6	0.01%
ecseta01	eCSE	0	0.0	0.00%	0.0	0.00%	245.9	0.01%
ecseta02	eCSE	0	0.0	0.00%	0.0	0.00%	248.0	0.01%
ecseta03	eCSE	0	0.0	0.00%	0.0	0.00%	257.1	0.01%
eCSE Total		407	1,202.7	0.03%	16,528.5	0.43%	8,388.8	0.22%
d43	ECDF	337	6,685.3	0.17%	6,738.4	0.17%	30,795.3	0.80%
d25	Research	77	691.8	0.02%	791.1	0.02%	3,982.5	0.10%

Project	Project Class	Number of Jobs	Charged kAUs	Charged Utilisation	Used kAUs	Utilisation	Allocated kAUs	Allocation
d35	Research	310	920.9	0.02%	920.9	0.02%	661.9	0.02%
d37	Research	0	0.0	0.00%	0.0	0.00%	2,825.6	0.07%
d41	Research	0	0.0	0.00%	0.0	0.00%	1,265.8	0.03%
d56	Research	1,337	13,163.8	0.34%	13,270.9	0.34%	10,050.5	0.26%
d57	Research	11	40.3	0.00%	40.3	0.00%	96.7	0.00%
d60	Research	0	0.0	0.00%	0.0	0.00%	161.9	0.00%
d61	Research	0	0.0	0.00%	0.0	0.00%	166.7	0.00%
d62	Research	80	5.0	0.00%	5.0	0.00%	863.4	0.02%
d63	Research	310	218.8	0.01%	219.6	0.01%	934.3	0.02%
d64	Research	0	0.0	0.00%	0.0	0.00%	700.7	0.02%
d65	Research	14	1.3	0.00%	1.3	0.00%	18,685.8	0.48%
d66	Research	7	1.8	0.00%	2.2	0.00%	2.1	0.00%
d67	Research	3	0.0	0.00%	22.2	0.00%	317.4	0.01%
d69	Research	0	0.0	0.00%	0.0	0.00%	490.4	0.01%
d70	Research	114	753.1	0.02%	753.1	0.02%	213.8	0.01%
d71	Research	0	0.0	0.00%	0.0	0.00%	4,051.4	0.10%
d72	Research	143	353.3	0.01%	2,148.4	0.06%	1,835.0	0.05%
d73	Research	107	16,788.2	0.43%	17,176.9	0.44%	29,171.9	0.75%
d75	Research	20	140.8	0.00%	123.5	0.00%	270.9	0.01%
d76	Research	0	0.0	0.00%	0.0	0.00%	67.3	0.00%
d78	Research	0	0.0	0.00%	0.0	0.00%	184.3	0.00%
d79	Research	0	0.0	0.00%	0.0	0.00%	327.8	0.01%
d81	Research	2	185.1	0.00%	185.1	0.00%	155.1	0.00%
e324	Research	59	3,993.1	0.10%	3,993.1	0.10%	1,704.3	0.04%
i01	Industrial	0	0.0	0.00%	0.0	0.00%	109.2	0.00%
i02	Industrial	0	0.0	0.00%	0.0	0.00%	1.9	0.00%
i03	Industrial	0	0.0	0.00%	0.0	0.00%	5,415.8	0.14%
i04	Industrial	0	0.0	0.00%	0.0	0.00%	68.6	0.00%
i06	Industrial	0	0.0	0.00%	0.0	0.00%	137.3	0.00%
i10	Industrial	0	0.0	0.00%	0.0	0.00%	129.6	0.00%
i13	Industrial	23	0.4	0.00%	0.4	0.00%	4.9	0.00%
i15	Industrial	0	0.0	0.00%	0.0	0.00%	598.7	0.02%
i16	Industrial	0	0.0	0.00%	0.0	0.00%	22.6	0.00%
i17	Industrial	13	1.5	0.00%	10.3	0.00%	12.2	0.00%
x06	Industrial	0	0.0	0.00%	0.0	0.00%	13.6	0.00%
x08	Industrial	20	4.6	0.00%	4.6	0.00%	173.9	0.00%
d59	Training	15	0.6	0.00%	0.6	0.00%	966.1	0.02%
d68	Training	79	308.6	0.01%	309.0	0.01%	1,250.0	0.03%
d74	Training	136	14.5	0.00%	14.5	0.00%	222.0	0.01%
d39	Service	0	0.0	0.00%	0.0	0.00%	230.2	0.01%
d77	Service	10	37.7	0.00%	37.7	0.00%	56.2	0.00%
d80	Service	1	0.4	0.00%	0.4	0.00%	108.6	0.00%
i14	Service	0	0.0	0.00%	0.0	0.00%	1,230.8	0.03%
y01	Service	0	0.0	0.00%	0.0	0.00%	220.3	0.01%
y02	Service	7	69.4	0.00%	69.4	0.00%	1,534.7	0.04%
y07	Service	55	1.0	0.00%	1.6	0.00%	142.6	0.00%
z02	Service	7	0.1	0.00%	0.3	0.00%	458.7	0.01%
z99	Service	76	0.9	0.00%	1.0	0.00%	18.0	0.00%
DirectorsTime Total		3,373	44,382.1	1.15%	46,841.7	1.21%	123,109.1	3.18%
y14	Training	3,060	2,337.8	0.06%	1,907.0	0.05%	487.0	0.01%
z01	Service	798	8,710.8	0.23%	8,641.3	0.22%	12,879.9	0.33%
CSE Total		3,858	11,048.6	0.29%	10,548.4	0.27%	13,366.9	0.35%
v01	Service	6,019	0.0	0.00%	341,271.9	8.82%	100,000.0	2.59%
w01	Service	3	0.0	0.00%	0.0	0.00%	502.9	0.01%
w02	Service	0	0.0	0.00%	0.0	0.00%	502.9	0.01%
w03	Service	86	559.1	0.01%	559.1	0.01%	479.1	0.01%
w04	Service	4	1,116.6	0.03%	1,116.6	0.03%	502.9	0.01%
w05	Service	124	69.3	0.00%	69.3	0.00%	502.9	0.01%
y21	Service	0	0.0	0.00%	0.0	0.00%	502.9	0.01%
z14	Service	0	0.0	0.00%	0.0	0.00%	594.8	0.02%
Internal Total		6,236	1,745.0	0.05%	343,016.9	8.87%	103,588.2	2.68%
Total		219,224	2,757,639.5	71.29%	3,372,085.2	87.17%	3,617,973.7	93.53%

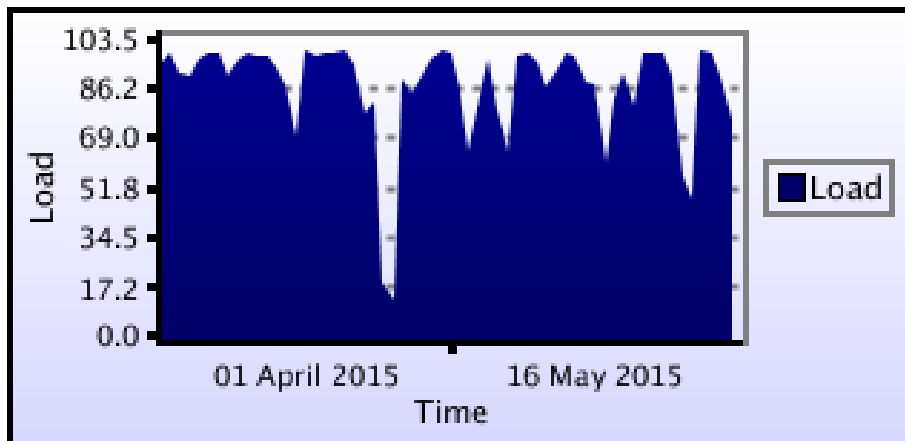




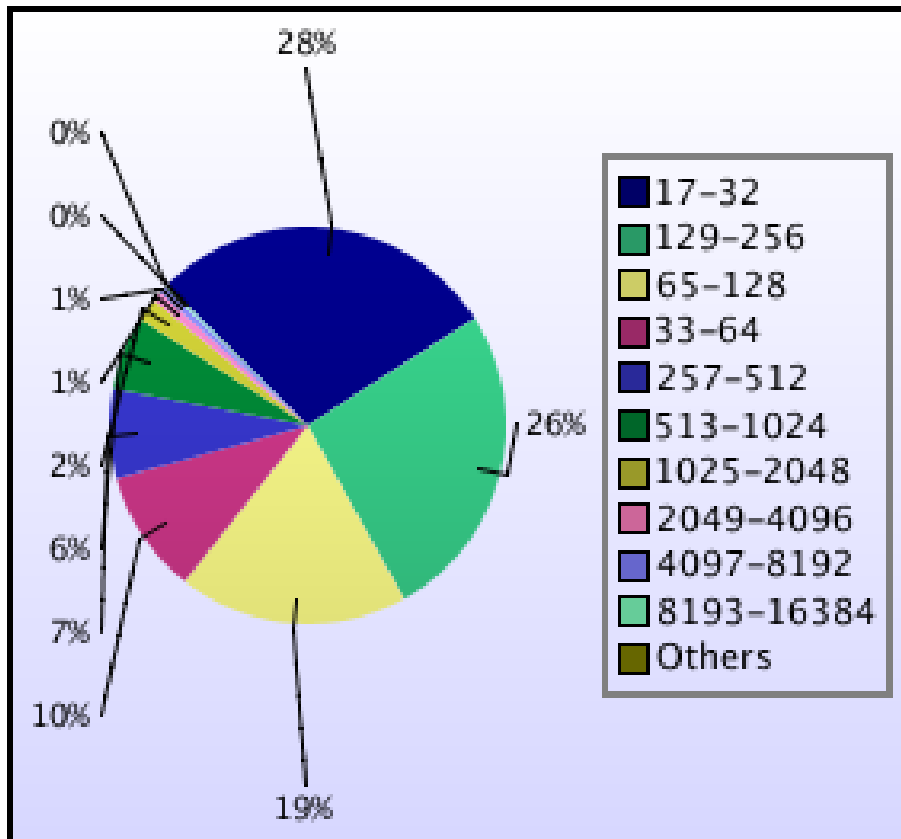
kAUs (by Size)

Size	kAUs	Number of Jobs
17-32	27,136.394	62,309
33-64	40,621.547	22,054
65-128	191,218.072	41,067
129-256	330,697.835	56,940
257-512	441,399.745	15,959
513-1024	600,625.941	13,172
1025-2048	369,350.973	4,091
2049-4096	348,202.802	1,819
4097-8192	271,023.672	1,294
8193-16384	119,882.494	416
16385-32768	4,414.814	62
32769-65536	7,242.964	8
65537-131072	184.691	1

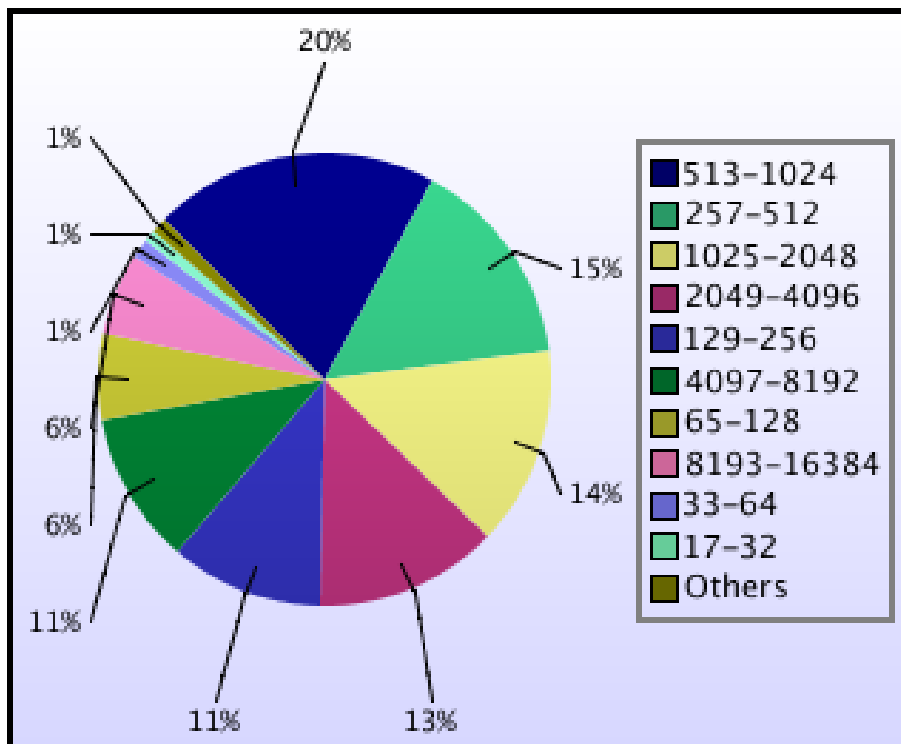
Load plots



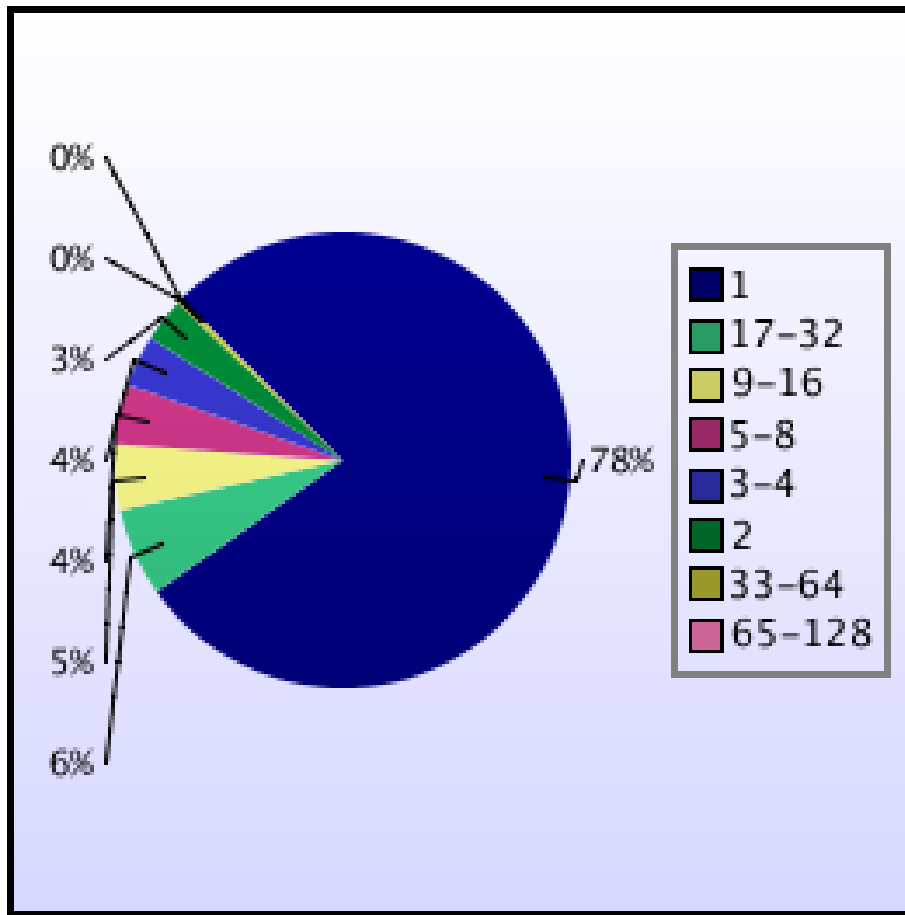
Percentage load on machine



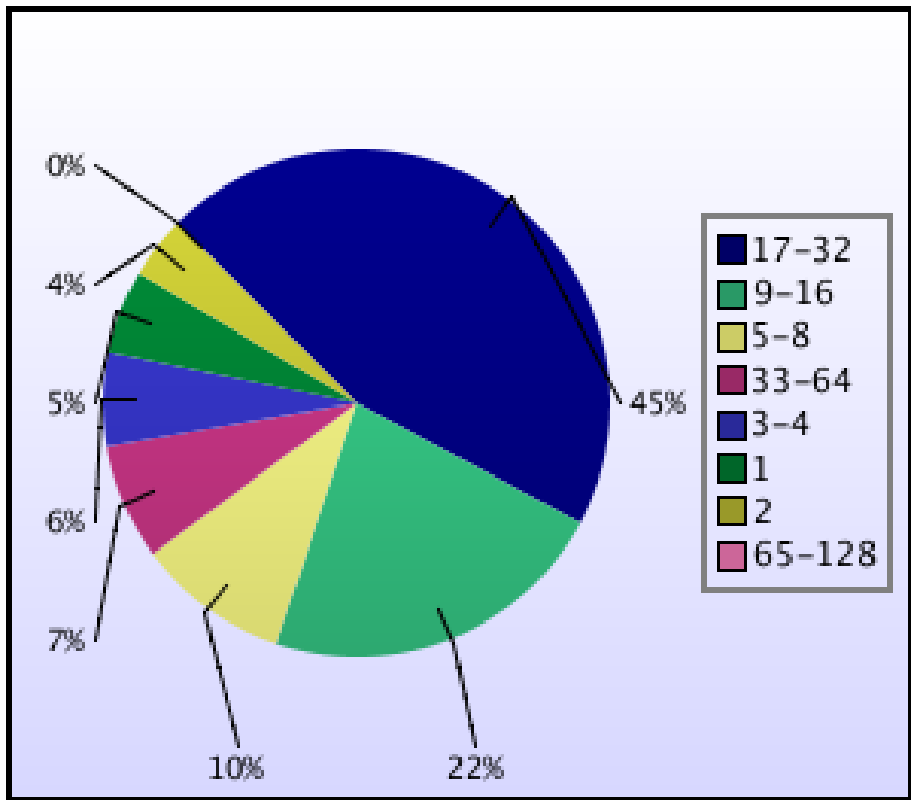
Jobs by Size



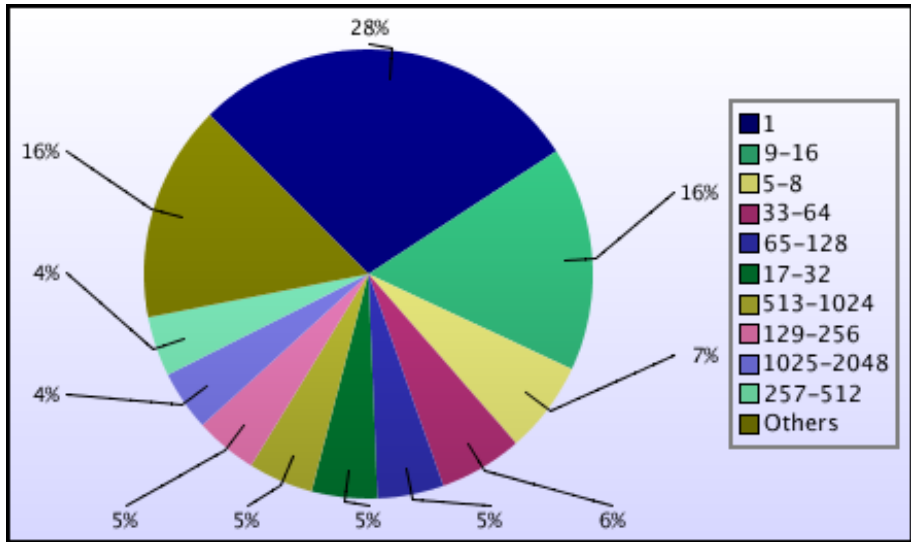
kAUs used by Size



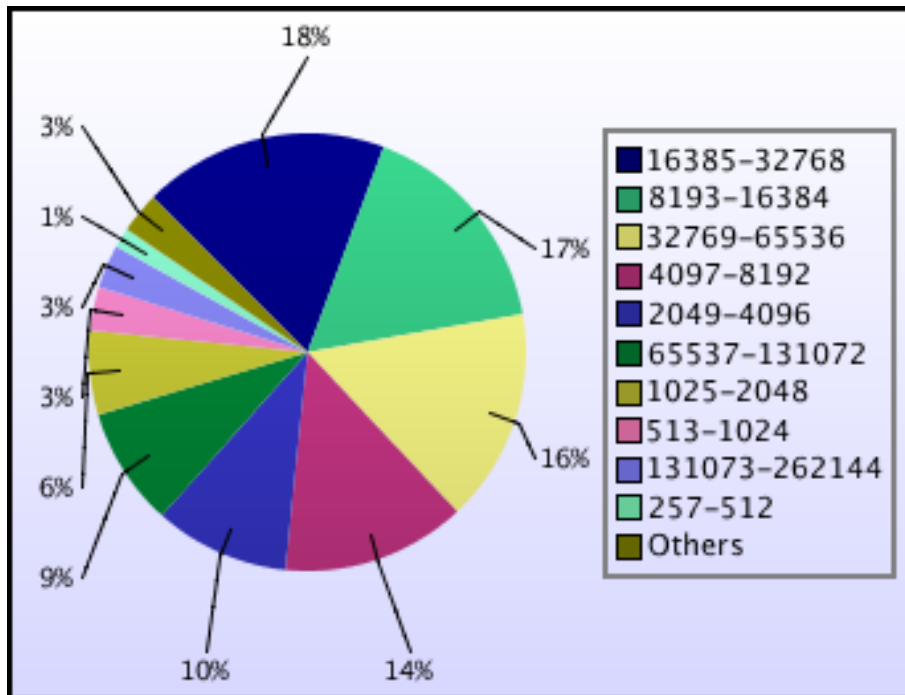
Jobs grouped by wall-clock-hours



kAUs used grouped by wall-clock-hours



Jobs grouped by core-hours

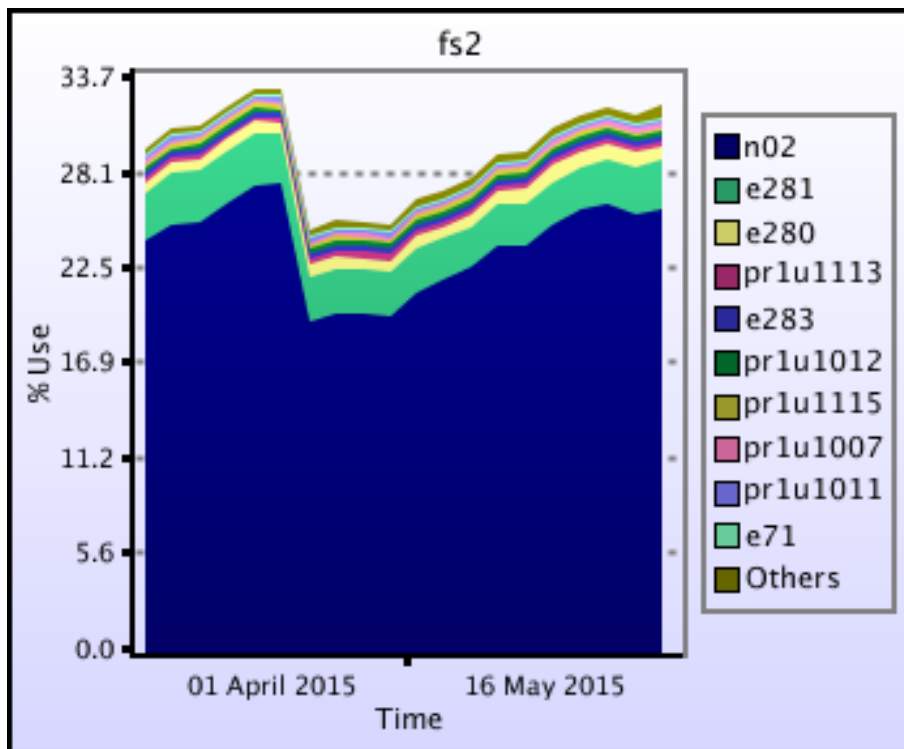


kAUs used grouped by core-hours

Disk usage

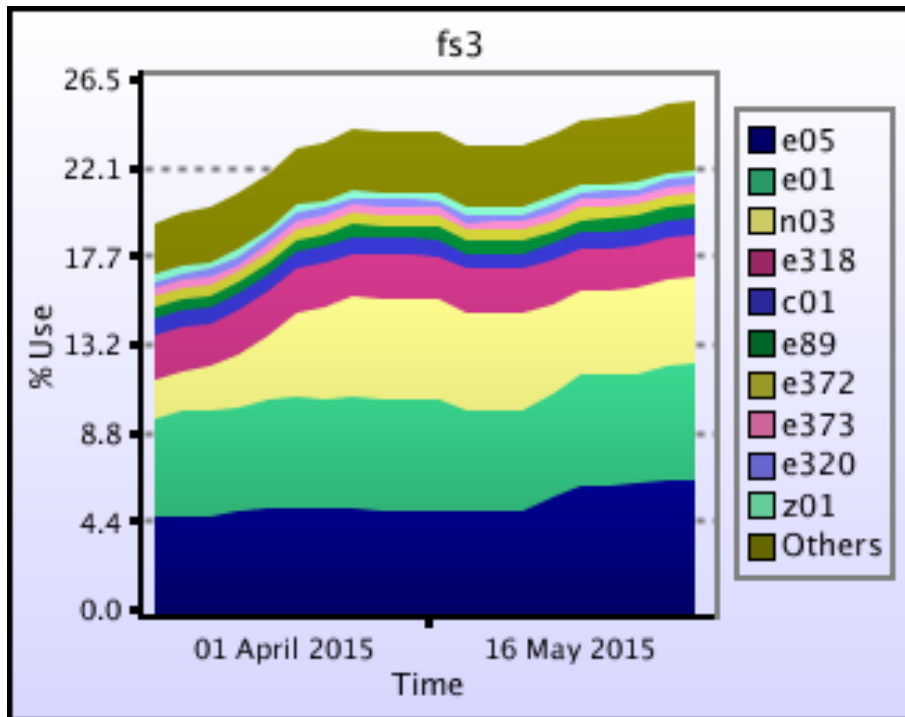
Disk usage for work (fs2)

This is a plot of Disk Use on fs2 against time. The plot is divided into a number of classes according to Project. This is a stacked plot so the top of the plot represents the total usage at a given time.



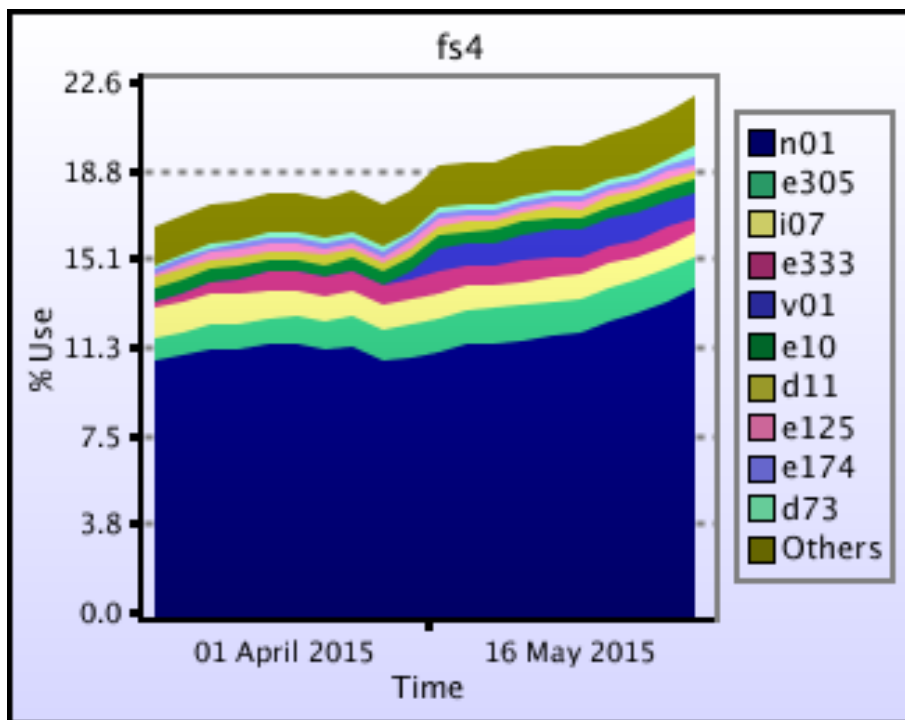
Disk usage for work (fs3)

This is a plot of Disk Use on fs3 against time. The plot is divided into a number of classes according to Project. This is a stacked plot so the top of the plot represents the total usage at a given time.



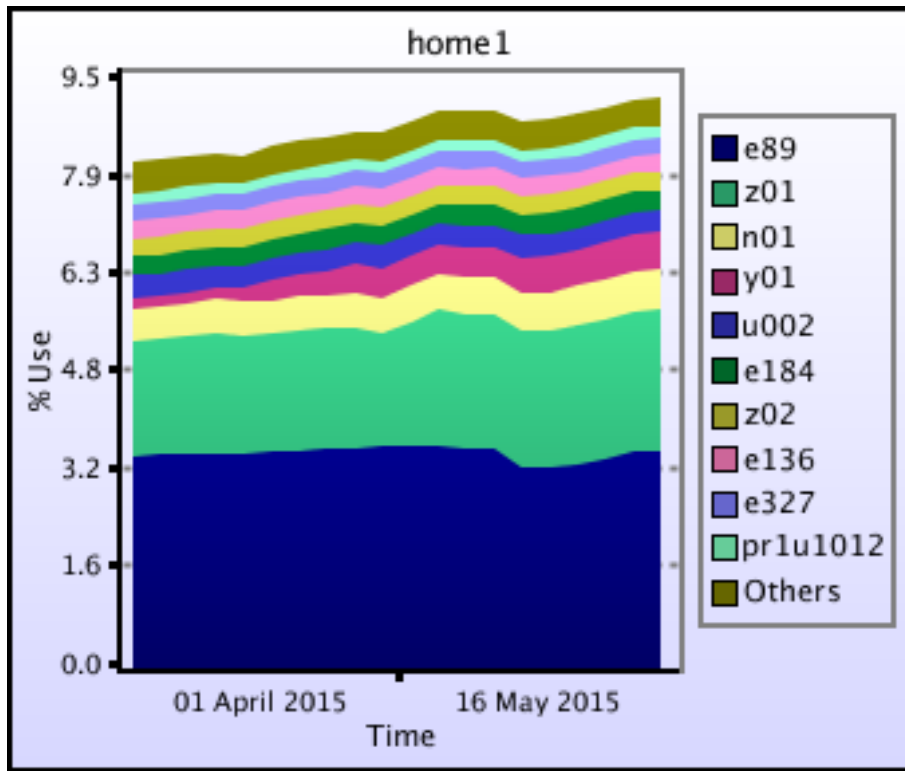
Disk usage for work (fs4)

This is a plot of Disk Use on fs4 against time. The plot is divided into a number of classes according to Project. This is a stacked plot so the top of the plot represents the total usage at a given time.



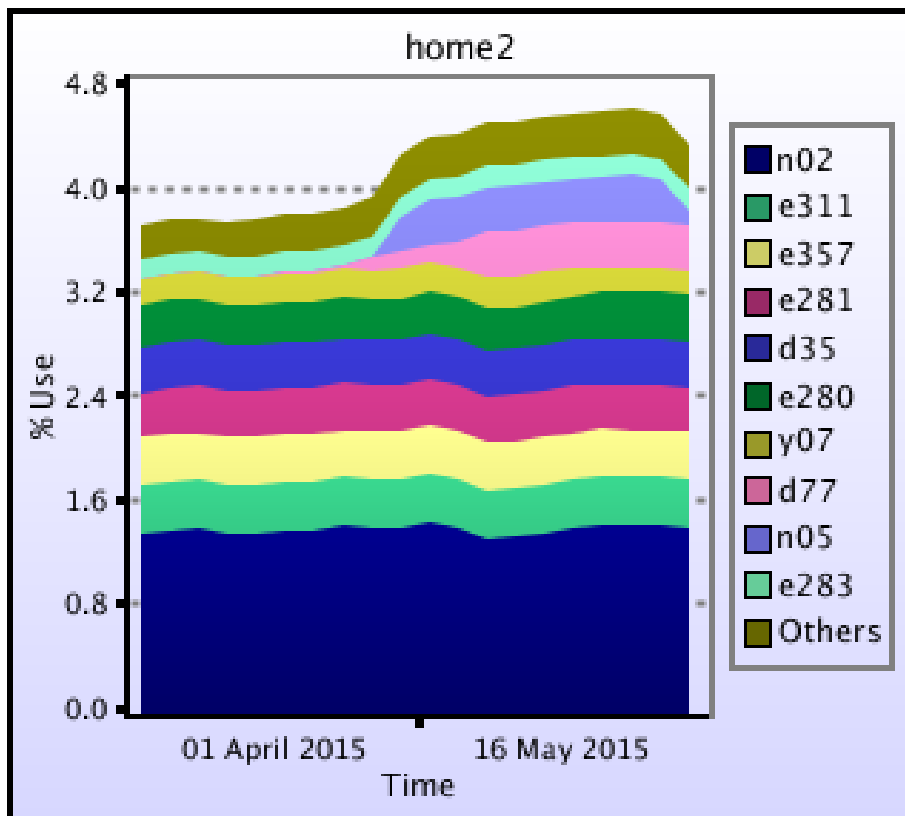
Disk usage for home (home1)

This is a plot of Disk Use on home1 against time. The plot is divided into a number of classes according to Project. This is a stacked plot so the top of the plot represents the total usage at a given time.



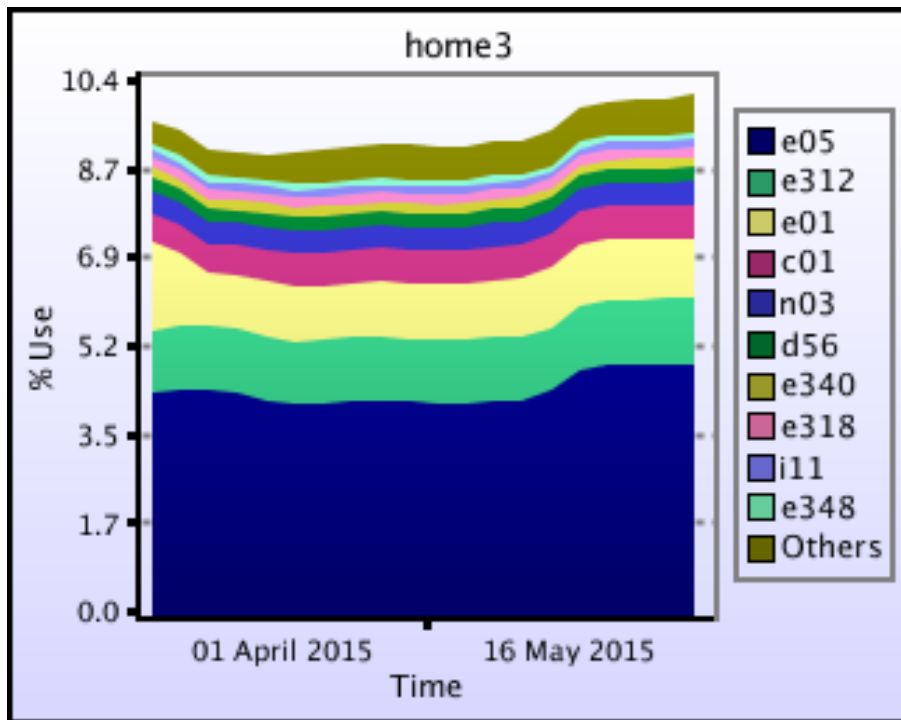
Disk usage for home (home2)

This is a plot of Disk Use on home2 against time. The plot is divided into a number of classes according to Project. This is a stacked plot so the top of the plot represents the total usage at a given time.



Disk usage for home (home3)

This is a plot of Disk Use on home3 against time. The plot is divided into a number of classes according to Project. This is a stacked plot so the top of the plot represents the total usage at a given time.



Disk usage for home (home4)

This is a plot of Disk Use on home4 against time. The plot is divided into a number of classes according to Project. This is a stacked plot so the top of the plot represents the total usage at a given time.

