

# Monthly Reporting

## Report from 01 October 2014 to 31 December 2014

### Report for Resource Pool XC on ARCHER

A total of 2894515.135 kAU were available during this period.

#### Use and Allocations (by Project)

In the following table Charged refers to usage which was charged against the project Allocation. This excludes any usage discounted via incentive schemes. The (Allocation) column is the time allocated to the project, scaled according to the reporting period and shown as a fraction of the available resources.

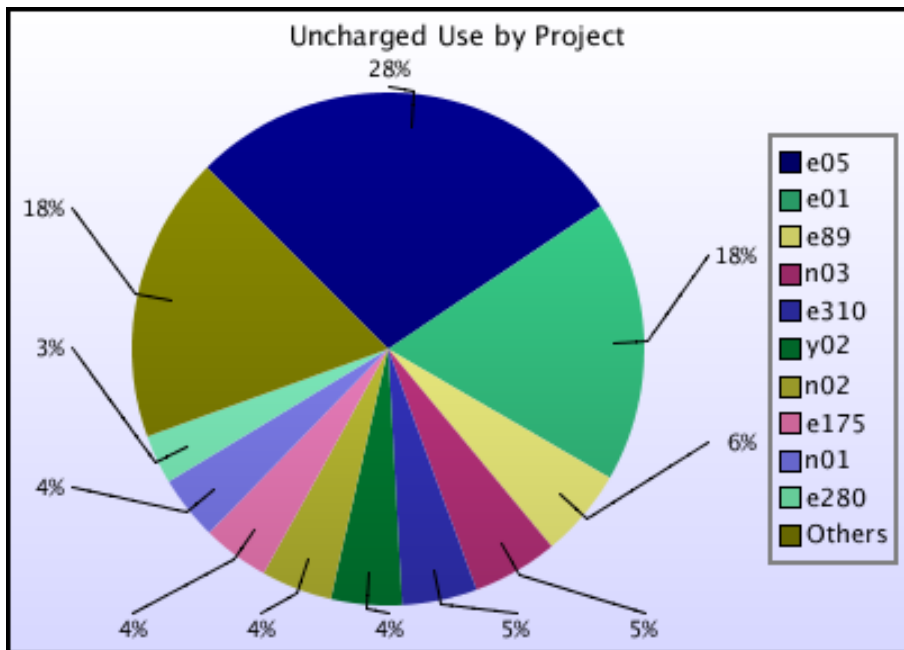
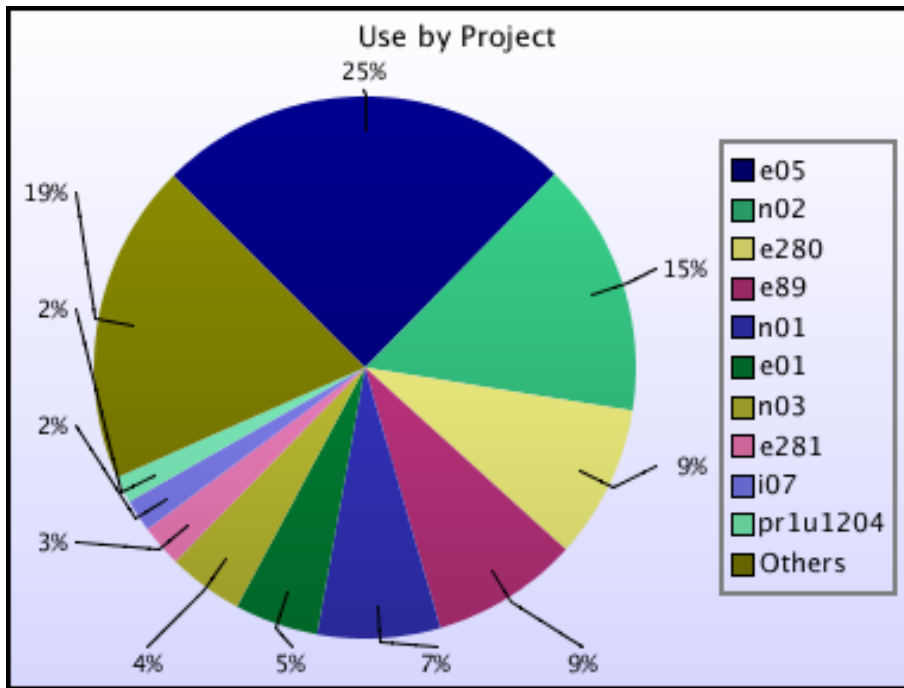
Project	Project Class	Number of Jobs	Charged kAUs	Charged Utilisation	Used kAUs	Utilisation	Allocation
e01	Consortia	1555	71532.0	2.47%	122614.7	4.24%	5.66%
e05	Consortia	23164	529828.2	18.30%	610590.1	21.09%	17.01%
e89	Consortia	13352	199712.5	6.90%	215865.2	7.46%	10.88%
e280	Consortia	25096	216276.5	7.47%	225213.9	7.78%	4.16%
e281	Consortia	1398	56011.9	1.94%	61499.2	2.12%	1.93%
e283	Consortia	2282	18583.1	0.64%	21309.8	0.74%	1.56%
e305	Consortia	1613	33364.2	1.15%	34919.9	1.21%	1.78%
u005	Early use	36	0.0	0.00%	1544.1	0.05%	0.00%
c01	Class1a	601	4903.1	0.17%	10157.2	0.35%	0.32%
e10	Class1a	303	3312.5	0.11%	5299.3	0.18%	0.81%
e71	Class1a	41	322.0	0.01%	322.0	0.01%	0.26%
e110	Class1a	280	27759.5	0.96%	29067.5	1.00%	0.45%
e125	Class1a	278	3840.1	0.13%	4028.5	0.14%	0.36%
e155	Class1a	50	93.8	0.00%	128.5	0.00%	0.04%
e165	Class1a	0	0.0	0.00%	0.0	0.00%	0.04%
e174	Class1a	1127	2130.0	0.07%	2207.5	0.08%	0.11%
e175	Class1a	522	9456.4	0.33%	21609.7	0.75%	0.18%
e179	Class1a	159	3072.4	0.11%	3125.3	0.11%	0.49%
e182	Class1a	133	30.8	0.00%	30.8	0.00%	0.04%
e184	Class1a	992	31669.8	1.09%	33543.5	1.16%	0.74%
e187	Class1a	0	0.0	0.00%	0.0	0.00%	0.00%
e191	Class1a	390	5682.9	0.20%	5751.5	0.20%	0.19%
e202	Class1a	181	23951.9	0.83%	24346.4	0.84%	2.08%
e220	Class1a	38	166.7	0.01%	288.0	0.01%	0.05%
e228	Class1a	41	858.6	0.03%	858.6	0.03%	0.05%
e229	Class1a	133	355.6	0.01%	355.6	0.01%	0.05%
e266	Class1a	404	1968.2	0.07%	8156.4	0.28%	0.94%
e268	Class1a	0	0.0	0.00%	0.0	0.00%	0.05%
e272	Class1a	639	4527.6	0.16%	4798.4	0.17%	0.38%
e282	Class1a	111	68.0	0.00%	68.3	0.00%	0.08%
e290	Class1a	667	567.6	0.02%	568.1	0.02%	0.01%
e291	Class1a	0	0.0	0.00%	0.0	0.00%	0.08%
e300	Class1a	6	0.0	0.00%	0.0	0.00%	0.08%
e301	Class1a	7	32.9	0.00%	32.9	0.00%	0.09%
e304	Class1a	170	1447.4	0.05%	1551.1	0.05%	0.74%
e320	Class1a	0	0.0	0.00%	0.0	0.00%	0.24%
e330	Class1a	0	0.0	0.00%	0.0	0.00%	0.02%
e331	Class1a	0	0.0	0.00%	0.0	0.00%	0.14%
e332	Class1a	0	0.0	0.00%	0.0	0.00%	0.07%
e333	Class1a	166	6772.6	0.23%	6851.7	0.24%	0.46%
e336	Class1a	0	0.0	0.00%	0.0	0.00%	0.02%
e342	Class1a	37	4043.4	0.14%	4043.4	0.14%	0.05%
e343	Class1a	1991	10824.3	0.37%	11178.7	0.39%	0.15%
e358	Class1a	0	0.0	0.00%	0.0	0.00%	0.05%
e364	Class1a	1	0.0	0.00%	0.0	0.00%	0.08%
e365	Class1a	0	0.0	0.00%	0.0	0.00%	0.15%
e377	Class1a	0	0.0	0.00%	0.0	0.00%	0.06%
e309	Direct Access: ARCHER RAP	52	1451.7	0.05%	1881.8	0.07%	0.11%
e310	Direct Access: ARCHER RAP	52	19967.1	0.69%	33564.3	1.16%	0.34%

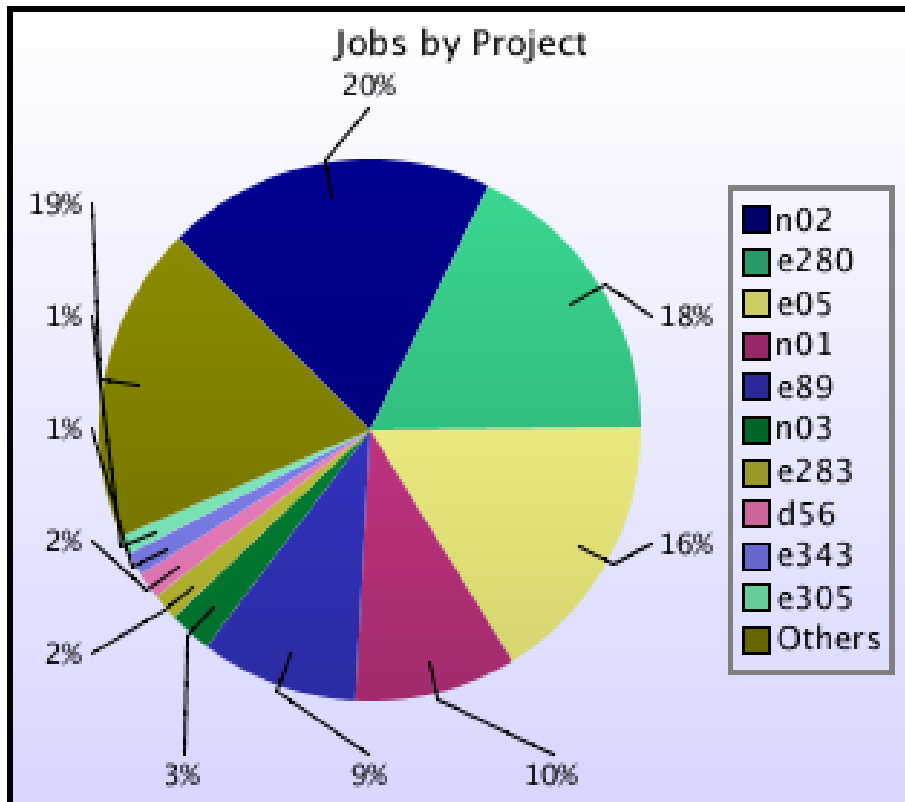
Project	Project Class	Number of Jobs	Charged kAUs	Charged Utilisation	Used kAUs	Utilisation	Allocation
e312	Direct Access: ARCHER RAP	51	1078.2	0.04%	1104.5	0.04%	0.12%
e313	Direct Access: ARCHER RAP	8	46.3	0.00%	46.3	0.00%	0.12%
e314	Direct Access: ARCHER RAP	27	2070.0	0.07%	2151.3	0.07%	0.17%
e316	Direct Access: ARCHER RAP	0	0.0	0.00%	0.0	0.00%	0.06%
e317	Direct Access: ARCHER RAP	214	1669.3	0.06%	5090.9	0.18%	0.44%
e318	Direct Access: ARCHER RAP	39	19.0	0.00%	19.0	0.00%	0.19%
e319	Direct Access: ARCHER RAP	0	0.0	0.00%	0.0	0.00%	0.06%
e321	Direct Access: ARCHER RAP	180	10176.3	0.35%	10966.3	0.38%	0.17%
e323	Direct Access: ARCHER RAP	36	5337.0	0.18%	5337.0	0.18%	0.14%
e326	Direct Access: ARCHER RAP	0	0.0	0.00%	0.0	0.00%	0.17%
e338	Direct Access: ARCHER RAP	21	80.3	0.00%	459.5	0.02%	0.39%
e339	Direct Access: ARCHER RAP	403	7017.0	0.24%	7845.4	0.27%	0.35%
e346	Direct Access: ARCHER RAP	162	6096.7	0.21%	6167.4	0.21%	0.11%
e347	Direct Access: ARCHER RAP	268	242.8	0.01%	242.9	0.01%	0.09%
e348	Direct Access: ARCHER RAP	1288	8696.8	0.30%	9059.8	0.31%	0.40%
e349	Direct Access: ARCHER RAP	0	0.0	0.00%	0.0	0.00%	0.09%
e350	Direct Access: ARCHER RAP	0	0.0	0.00%	0.0	0.00%	0.50%
e351	Direct Access: ARCHER RAP	196	2051.0	0.07%	2060.2	0.07%	0.06%
e352	Direct Access: ARCHER RAP	873	3477.6	0.12%	4596.9	0.16%	0.16%
e354	Direct Access: ARCHER RAP	156	12578.6	0.43%	12581.6	0.43%	0.11%
e355	Direct Access: ARCHER RAP	343	4833.6	0.17%	4971.3	0.17%	0.27%
e356	Direct Access: ARCHER RAP	64	3496.0	0.12%	4463.3	0.15%	0.10%
e360	Direct Access: ARCHER RAP	50	1720.8	0.06%	1729.4	0.06%	0.13%
e370	Direct Access: ARCHER RAP	0	0.0	0.00%	0.0	0.00%	0.18%
e371	Direct Access: ARCHER RAP	11	0.5	0.00%	0.5	0.00%	0.14%
e372	Direct Access: ARCHER RAP	11	440.6	0.02%	440.6	0.02%	0.29%
e373	Direct Access: ARCHER RAP	81	3.8	0.00%	4.4	0.00%	0.21%
e306	Instant Access	7	278.7	0.01%	399.0	0.01%	0.01%
e307	Instant Access	8	0.0	0.00%	449.2	0.02%	0.01%
e337	Instant Access	0	0.0	0.00%	0.0	0.00%	0.01%
e340	Instant Access	156	427.7	0.01%	427.8	0.01%	0.02%
e344	Instant Access	0	0.0	0.00%	0.0	0.00%	0.02%
e345	Instant Access	0	0.0	0.00%	0.0	0.00%	0.01%
e359	Instant Access	52	1052.9	0.04%	1052.9	0.04%	0.02%
e362	Instant Access	0	0.0	0.00%	0.0	0.00%	0.02%
e363	Instant Access	0	0.0	0.00%	0.0	0.00%	0.02%
e366	Instant Access	19	0.0	0.00%	0.0	0.00%	0.02%
e367	Instant Access	61	15.6	0.00%	15.6	0.00%	0.00%

Project	Project Class	Number of Jobs	Charged kAUs	Charged Utilisation	Used kAUs	Utilisation	Allocation
e368	Instant Access	0	0.0	0.00%	0.0	0.00%	0.01%
e369	Instant Access	13	132.7	0.00%	149.0	0.01%	0.02%
e374	Instant Access	43	6.1	0.00%	6.1	0.00%	0.03%
e376	Instant Access	116	1083.0	0.04%	1083.0	0.04%	0.02%
e379	Instant Access	0	0.0	0.00%	0.0	0.00%	0.01%
e380	Instant Access	0	0.0	0.00%	0.0	0.00%	0.00%
e381	Instant Access	0	0.0	0.00%	0.0	0.00%	0.00%
r10	RDF: Pilot	0	0.0	0.00%	0.0	0.00%	0.00%
i07	Industrial	505	51929.6	1.79%	47623.0	1.65%	1.43%
<b>EPSRC Total</b>		<b>83530</b>	<b>1420643.7</b>	<b>49.08%</b>	<b>1637916.2</b>	<b>56.59%</b>	<b>60.56%</b>
n01	Consortia	13676	168281.5	5.81%	179938.4	6.22%	6.29%
n02	Consortia	27842	360020.9	12.44%	372718.4	12.88%	10.34%
n03	Consortia	3645	94864.9	3.28%	110398.0	3.81%	4.42%
<b>NERC Total</b>		<b>45163</b>	<b>623167.3</b>	<b>21.53%</b>	<b>663054.7</b>	<b>22.91%</b>	<b>21.05%</b>
b14	Class1a	0	0.0	0.00%	0.0	0.00%	0.03%
b16	Class1a	56	1166.6	0.04%	1508.5	0.05%	0.04%
e329	Class1a	66	917.2	0.03%	917.2	0.03%	0.04%
<b>BBSRC Total</b>		<b>122</b>	<b>2083.8</b>	<b>0.07%</b>	<b>2425.7</b>	<b>0.08%</b>	<b>0.11%</b>
pr1u0001	DECI: EXEC	0	0.0	0.00%	0.0	0.00%	0.00%
pr1u1103	DECI: EXEC	32	128.2	0.00%	131.1	0.00%	0.26%
pr1u1105	DECI: EXEC	0	0.0	0.00%	0.0	0.00%	0.28%
pr1u1109	DECI: EXEC	1348	26899.0	0.93%	27312.1	0.94%	0.26%
pr1u1110	DECI: EXEC	0	0.0	0.00%	0.0	0.00%	0.15%
pr1u1111	DECI: EXEC	24	195.2	0.01%	195.2	0.01%	0.05%
pr1u1112	DECI: EXEC	385	6913.8	0.24%	6927.3	0.24%	0.22%
pr1u1113	DECI: EXEC	23	6581.7	0.23%	6980.5	0.24%	0.43%
pr1u1114	DECI: EXEC	0	0.0	0.00%	0.0	0.00%	0.01%
pr1u1115	DECI: EXEC	128	138.5	0.00%	299.4	0.01%	0.13%
pr1u1202	DECI: EXEC	659	8687.6	0.30%	9090.6	0.31%	0.56%
pr1u1204	DECI: EXEC	215	38750.8	1.34%	39326.8	1.36%	0.29%
pr1u1205	DECI: EXEC	0	0.0	0.00%	0.0	0.00%	0.16%
pr1u1211	DECI: EXEC	68	418.0	0.01%	418.0	0.01%	0.15%
pr1u1212	DECI: EXEC	48	657.2	0.02%	1643.8	0.06%	0.21%
pr1u1213	DECI: EXEC	39	6833.7	0.24%	6833.7	0.24%	0.13%
pr1u1214	DECI: EXEC	32	61.4	0.00%	61.4	0.00%	0.09%
pr1u1215	DECI: EXEC	0	0.0	0.00%	0.0	0.00%	0.16%
pr1u1101	DECI: HOME	0	0.0	0.00%	0.0	0.00%	0.00%
pr1u1104	DECI: HOME	0	0.0	0.00%	0.0	0.00%	0.00%
pr1u1106	DECI: HOME	0	0.0	0.00%	0.0	0.00%	0.00%
pr1u1108	DECI: HOME	0	0.0	0.00%	0.0	0.00%	0.00%
pr1u1201	DECI: HOME	0	0.0	0.00%	0.0	0.00%	0.00%
pr1u1203	DECI: HOME	0	0.0	0.00%	0.0	0.00%	0.00%
pr1u1206	DECI: HOME	0	0.0	0.00%	0.0	0.00%	0.00%
pr1u1207	DECI: HOME	2	2.7	0.00%	2.7	0.00%	0.01%
pr1u1208	DECI: HOME	0	0.0	0.00%	0.0	0.00%	0.00%
pr1u1209	DECI: HOME	0	0.0	0.00%	0.0	0.00%	0.00%
pr1u1210	DECI: HOME	0	0.0	0.00%	0.0	0.00%	0.00%
pr1u0000	Service	0	0.0	0.00%	0.0	0.00%	0.00%
<b>PRACE Total</b>		<b>3003</b>	<b>96267.9</b>	<b>3.33%</b>	<b>99222.6</b>	<b>3.43%</b>	<b>3.56%</b>
ecse0101	eCSE	477	29.8	0.00%	29.8	0.00%	0.01%
ecse0102	eCSE	0	0.0	0.00%	0.0	0.00%	0.00%
ecse0103	eCSE	0	0.0	0.00%	0.0	0.00%	0.00%
ecse0104	eCSE	0	0.0	0.00%	0.0	0.00%	0.00%
ecse0105	eCSE	0	0.0	0.00%	0.0	0.00%	0.00%
ecse0108	eCSE	588	73.9	0.00%	73.9	0.00%	0.01%
ecse0109	eCSE	0	0.0	0.00%	0.0	0.00%	0.01%
ecse0110	eCSE	0	0.0	0.00%	0.0	0.00%	0.01%
ecse0113	eCSE	40	22.6	0.00%	22.6	0.00%	0.01%
ecse0115	eCSE	63	1.8	0.00%	1.9	0.00%	0.01%
ecse0116	eCSE	146	205.1	0.01%	205.1	0.01%	0.01%
ecse0117	eCSE	0	0.0	0.00%	0.0	0.00%	0.01%
ecse0118	eCSE	18	149.0	0.01%	149.0	0.01%	0.01%
ecse0202	eCSE	142	7.3	0.00%	7.8	0.00%	0.01%

Project	Project Class	Number of Jobs	Charged kAUs	Charged Utilisation	Used kAUs	Utilisation	Allocation
ecse0203	eCSE	0	0.0	0.00%	0.0	0.00%	0.00%
ecse0206	eCSE	85	6.6	0.00%	6.6	0.00%	0.00%
ecse0208	eCSE	0	0.0	0.00%	0.0	0.00%	0.00%
ecse0209	eCSE	0	0.0	0.00%	0.0	0.00%	0.00%
ecse0213	eCSE	15	4.0	0.00%	4.0	0.00%	0.00%
ecse0215	eCSE	5	30.1	0.00%	366.0	0.01%	0.00%
ecsepr01	eCSE	0	0.0	0.00%	0.0	0.00%	0.01%
ecsepr02	eCSE	95	594.1	0.02%	594.2	0.02%	0.01%
ecsepr03	eCSE	54	2.5	0.00%	2.5	0.00%	0.01%
ecsepr04	eCSE	0	0.0	0.00%	0.0	0.00%	0.01%
ecsepr05	eCSE	0	0.0	0.00%	0.0	0.00%	0.01%
ecsepr06	eCSE	0	0.0	0.00%	0.0	0.00%	0.01%
ecsepr07	eCSE	218	875.3	0.03%	875.3	0.03%	0.01%
ecsepr08	eCSE	0	0.0	0.00%	0.0	0.00%	0.01%
ecsepr09	eCSE	0	0.0	0.00%	0.0	0.00%	0.01%
ecsepr10	eCSE	0	0.0	0.00%	0.0	0.00%	0.01%
ecsepr11	eCSE	0	0.0	0.00%	0.0	0.00%	0.01%
ecsepr12	eCSE	0	0.0	0.00%	0.0	0.00%	0.01%
ecsepr13	eCSE	0	0.0	0.00%	0.0	0.00%	0.01%
ecsepr14	eCSE	0	0.0	0.00%	0.0	0.00%	0.01%
ecsepr15	eCSE	0	0.0	0.00%	0.0	0.00%	0.01%
ecseta01	eCSE	0	0.0	0.00%	0.0	0.00%	0.01%
ecseta02	eCSE	0	0.0	0.00%	0.0	0.00%	0.01%
ecseta03	eCSE	0	0.0	0.00%	0.0	0.00%	0.00%
<b>eCSE Total</b>		<b>1946</b>	<b>2002.1</b>	<b>0.07%</b>	<b>2338.6</b>	<b>0.08%</b>	<b>0.20%</b>
d43	ECDF	441	13147.9	0.45%	15462.2	0.53%	1.08%
d25	Research	72	271.4	0.01%	286.1	0.01%	0.26%
d35	Research	321	44.6	0.00%	44.6	0.00%	0.02%
d37	Research	718	2273.0	0.08%	2338.1	0.08%	0.11%
d41	Research	0	0.0	0.00%	0.0	0.00%	0.04%
d56	Research	2218	8382.3	0.29%	9152.3	0.32%	0.35%
d57	Research	15	1.8	0.00%	2178.3	0.08%	0.00%
d60	Research	0	0.0	0.00%	0.0	0.00%	0.01%
d61	Research	0	0.0	0.00%	0.0	0.00%	0.01%
d62	Research	18	22.2	0.00%	22.2	0.00%	0.03%
d63	Research	0	0.0	0.00%	0.0	0.00%	0.03%
d64	Research	0	0.0	0.00%	0.0	0.00%	0.02%
d65	Research	0	0.0	0.00%	0.0	0.00%	0.65%
d66	Research	0	0.0	0.00%	0.0	0.00%	0.00%
d67	Research	149	88.3	0.00%	88.5	0.00%	0.01%
d69	Research	34	232.1	0.01%	232.1	0.01%	0.02%
d70	Research	0	0.0	0.00%	0.0	0.00%	0.01%
d71	Research	205	264.6	0.01%	350.8	0.01%	0.12%
d72	Research	65	110.1	0.00%	110.1	0.00%	0.03%
d73	Research	0	0.0	0.00%	0.0	0.00%	0.24%
e324	Research	0	0.0	0.00%	0.0	0.00%	0.06%
i01	Industrial	28	2.4	0.00%	2.4	0.00%	0.00%
i02	Industrial	0	0.0	0.00%	0.0	0.00%	0.00%
i03	Industrial	0	0.0	0.00%	0.0	0.00%	0.19%
i04	Industrial	0	0.0	0.00%	0.0	0.00%	0.00%
i06	Industrial	28	108.2	0.00%	108.2	0.00%	0.00%
i10	Industrial	1	1.7	0.00%	1.7	0.00%	0.00%
i13	Industrial	0	0.0	0.00%	0.0	0.00%	0.00%
i15	Industrial	975	1412.3	0.05%	1421.3	0.05%	0.02%
x08	Industrial	78	225.2	0.01%	251.2	0.01%	0.01%
d59	Training	99	12.8	0.00%	12.8	0.00%	0.03%
d68	Training	143	14.6	0.00%	10.3	0.00%	0.04%
d39	Service	8	0.0	0.00%	0.0	0.00%	0.01%
i14	Service	0	0.0	0.00%	0.0	0.00%	0.04%
y01	Service	0	0.0	0.00%	0.0	0.00%	0.01%
y02	Service	109	204.8	0.01%	13071.0	0.45%	0.05%
y07	Service	21	0.5	0.00%	0.7	0.00%	0.00%
z02	Service	435	264.5	0.01%	1663.0	0.06%	0.03%

Project	Project Class	Number of Jobs	Charged kAUs	Charged Utilisation	Used kAUs	Utilisation	Allocation
z99	Service	76	1.3	0.00%	1.4	0.00%	0.00%
DirectorsTime Total		6257	27086.5	0.94%	46809.3	1.62%	3.56%
cse01	Research	0	0.0	0.00%	0.0	0.00%	0.01%
y14	Training	826	581.4	0.02%	393.7	0.01%	0.02%
z01	Service	790	958.5	0.03%	3362.5	0.12%	0.58%
CSE Total		1616	1540.0	0.05%	3756.2	0.13%	0.61%
Total		141637	2172791.2	75.07%	2455523.3	84.83%	89.67%

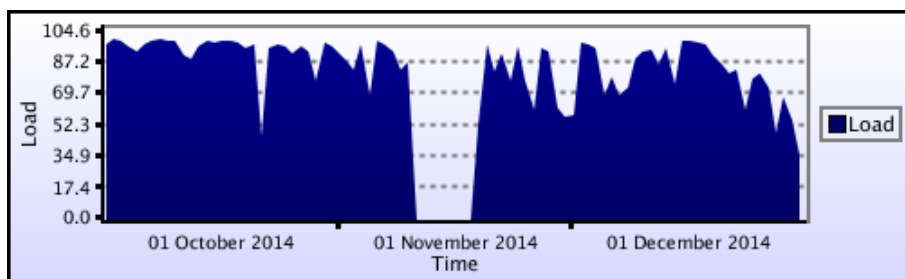




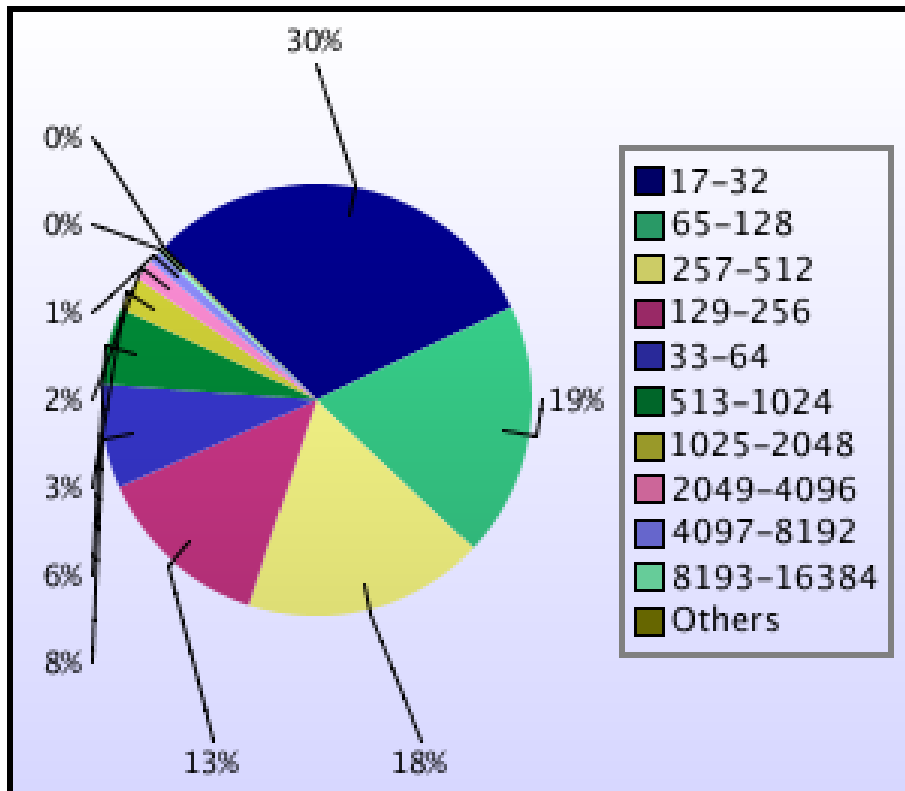
### kAUs (by Size)

Size	kAUs	Number of Jobs
17-32	25131.072	43076
33-64	43272.475	10957
65-128	133764.105	27099
129-256	207469.457	18873
257-512	252454.47	25513
513-1024	304613.133	8246
1025-2048	283501.875	3641
2049-4096	315392.968	2223
4097-8192	411967.779	1316
8193-16384	127001.595	462
16385-32768	20424.849	109
32769-65536	30110.967	44
65537-131072	3562.189	60

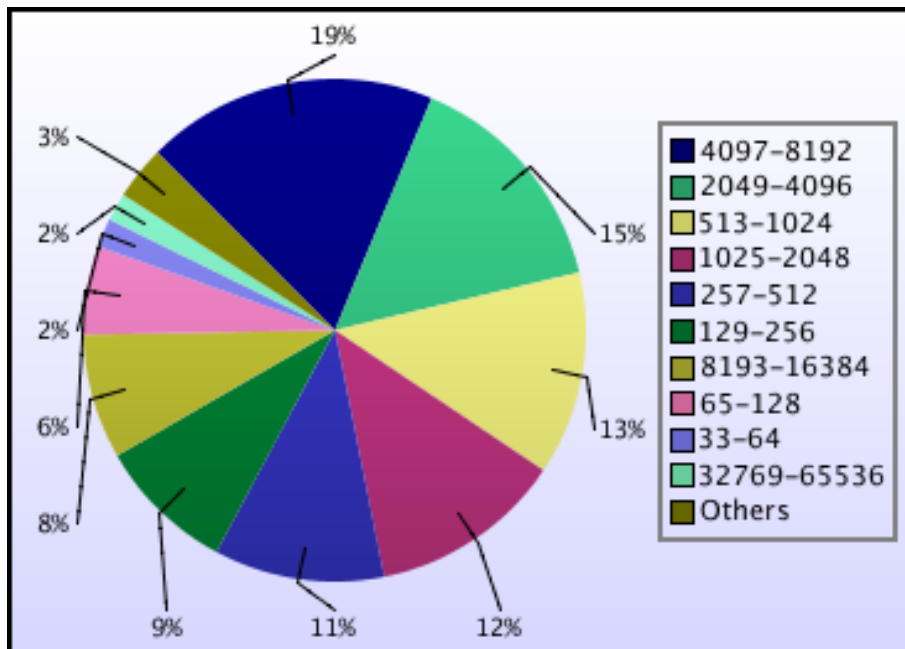
### Load plots



Percentage load on machine

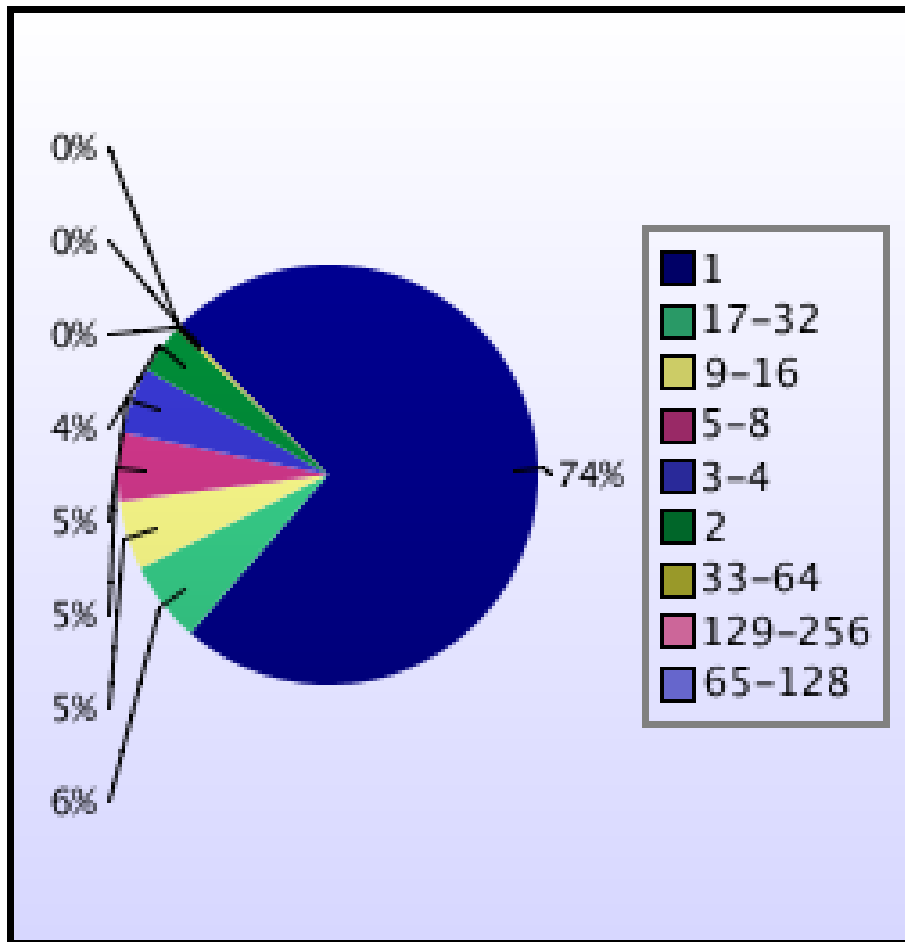


Jobs by Size

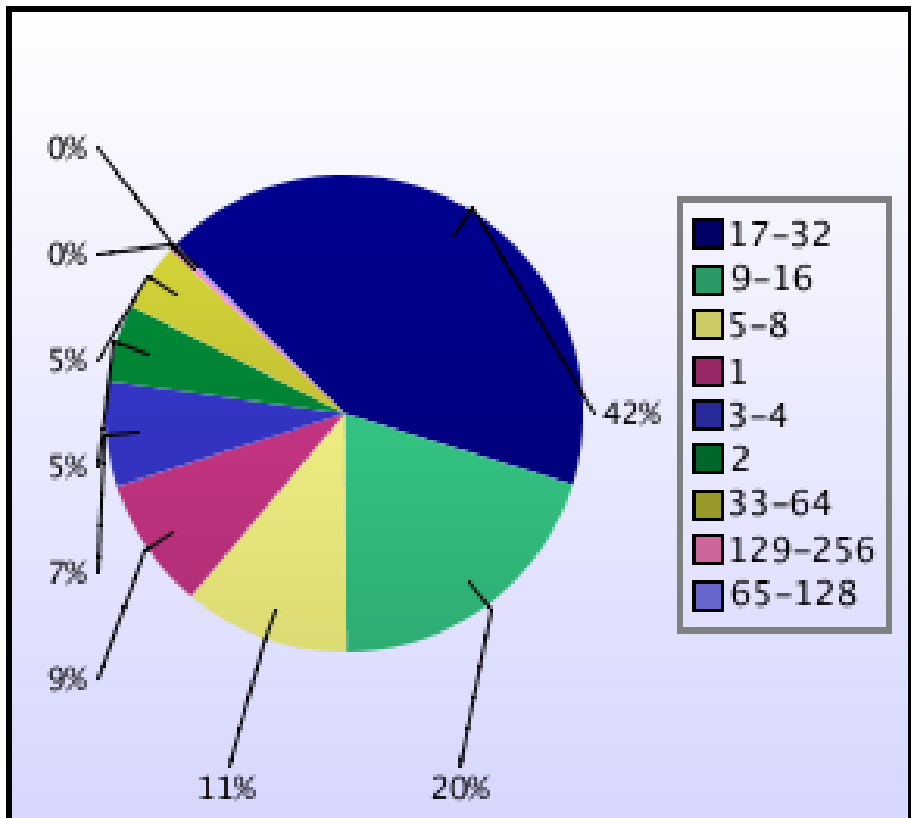


kAUs used by Size

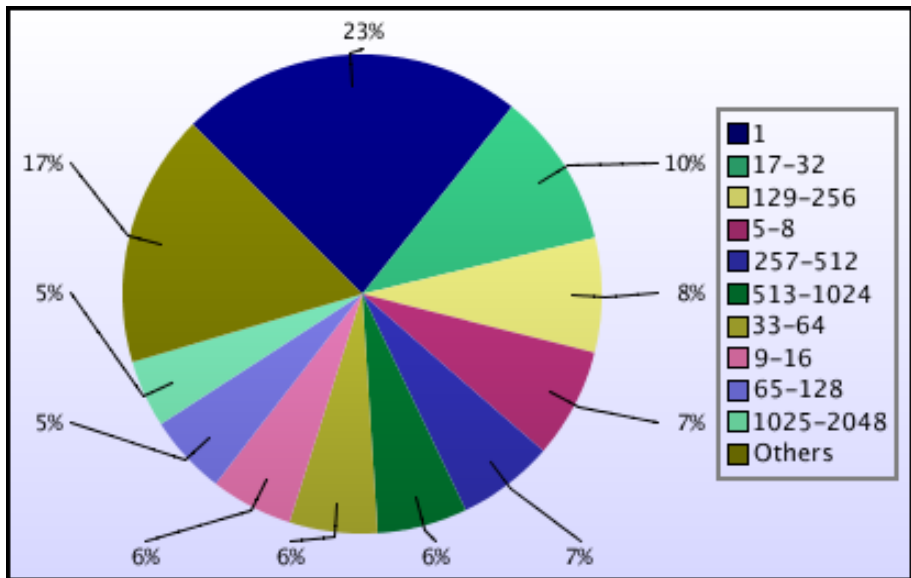




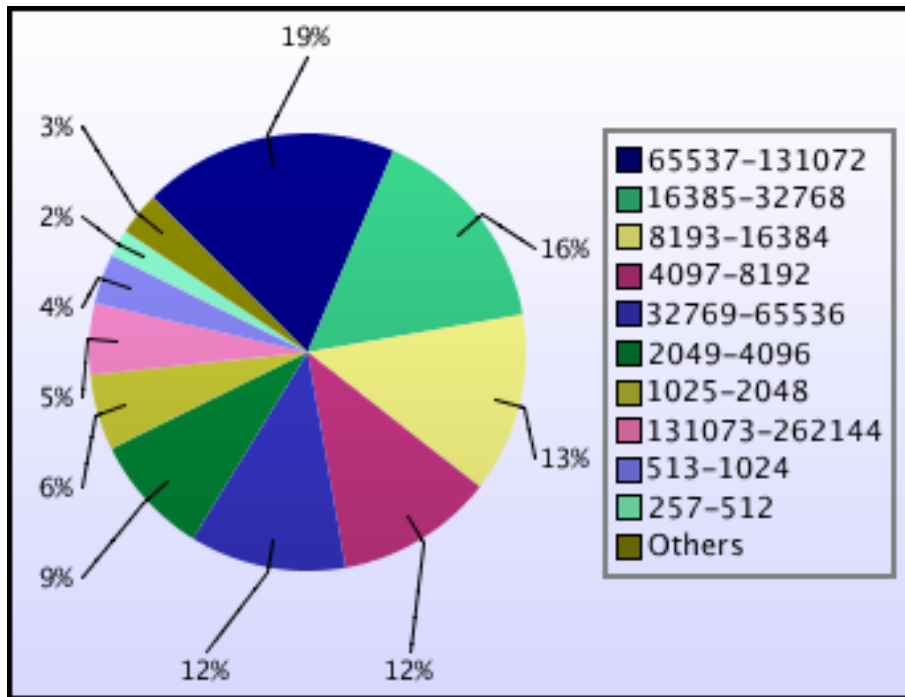
Jobs grouped by wall-clock-hours



KAUs used grouped by wall-clock-hours



Jobs grouped by core-hours

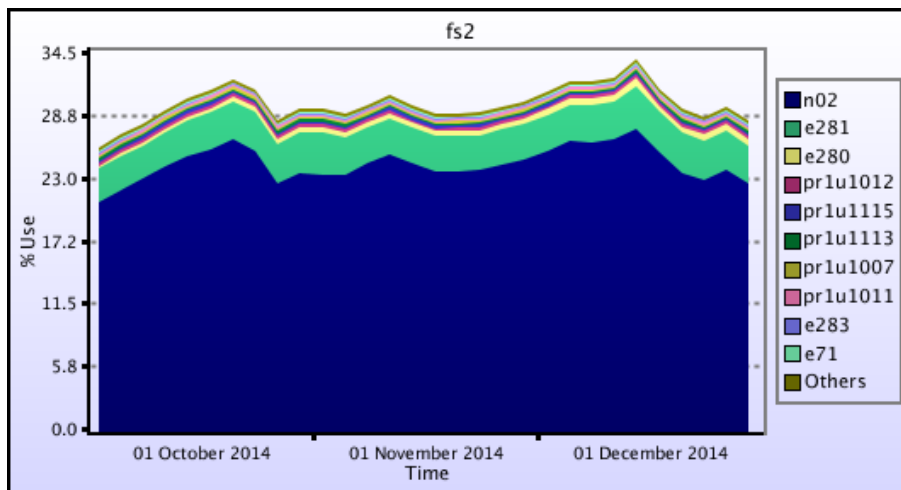


kAUs used grouped by core-hours

## Disk usage

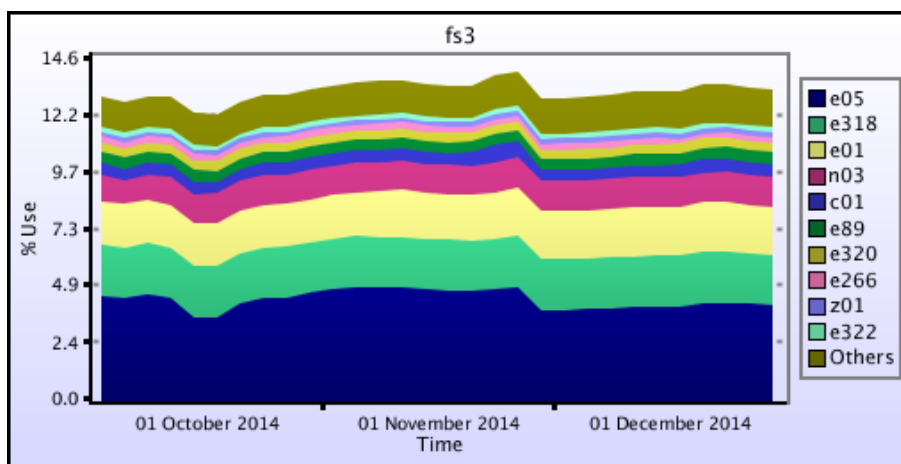
### Disk usage for work (fs2)

This is a plot of Disk Use on fs2 against time. The plot is divided into a number of classes according to Project. This is a stacked plot so the top of the plot represents the total usage at a given time.



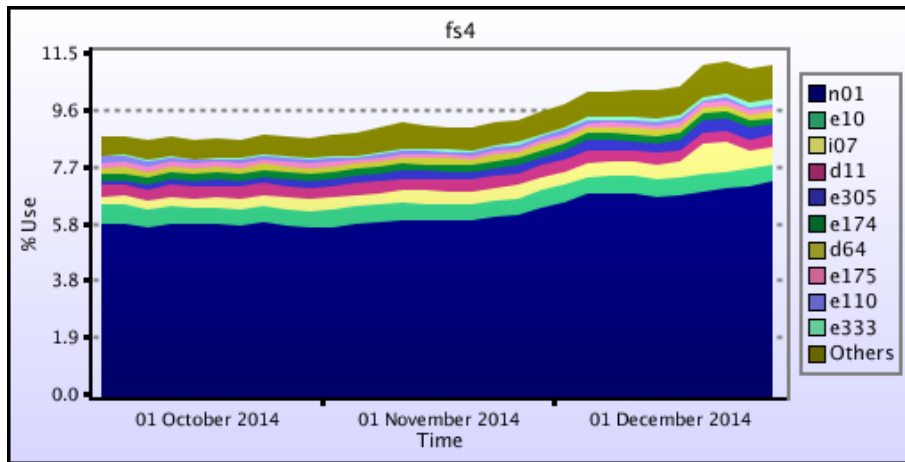
### Disk usage for work (fs3)

This is a plot of Disk Use on fs3 against time. The plot is divided into a number of classes according to Project. This is a stacked plot so the top of the plot represents the total usage at a given time.



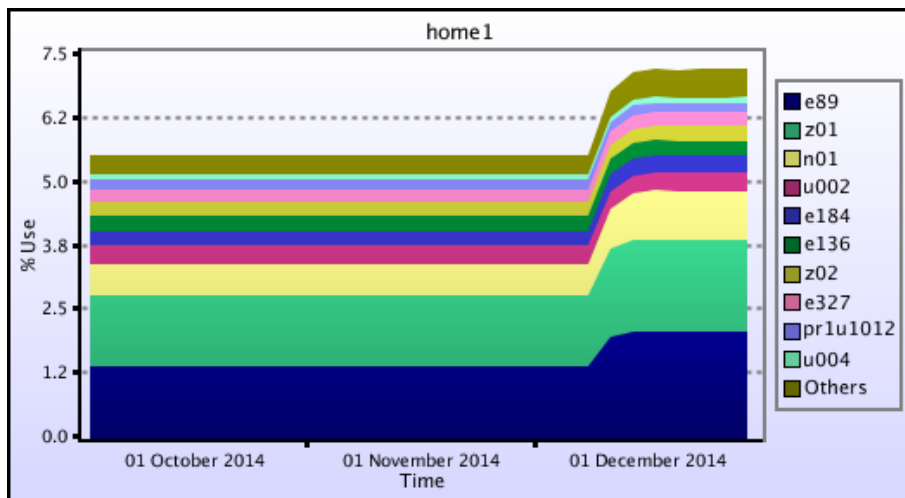
### Disk usage for work (fs4)

This is a plot of Disk Use on fs4 against time. The plot is divided into a number of classes according to Project. This is a stacked plot so the top of the plot represents the total usage at a given time.



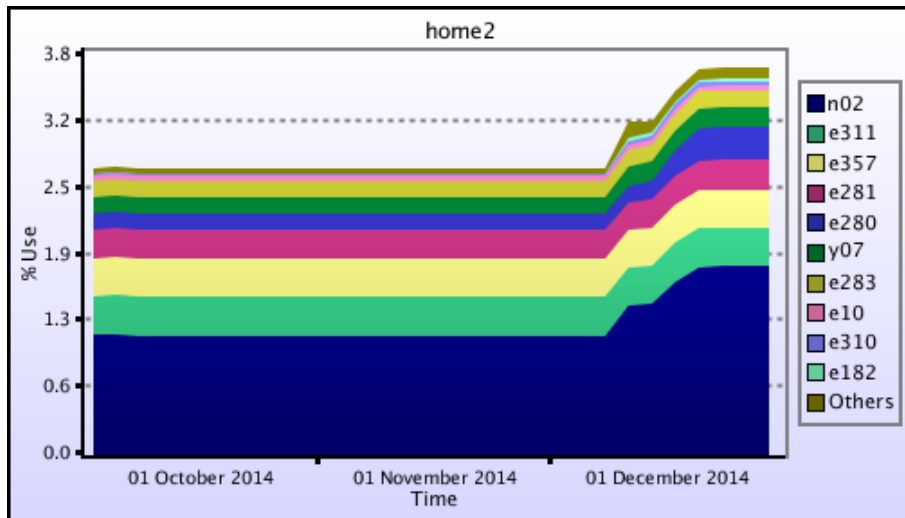
### Disk usage for home (home1)

This is a plot of Disk Use on home1 against time. The plot is divided into a number of classes according to Project. This is a stacked plot so the top of the plot represents the total usage at a given time.



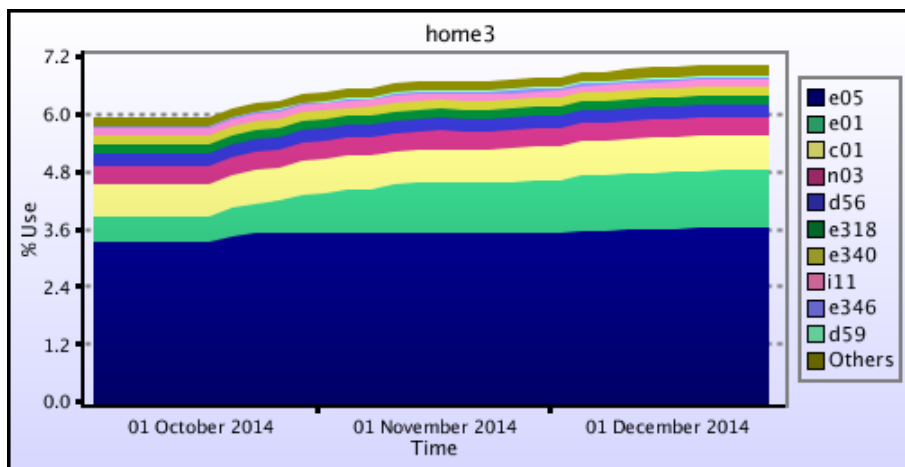
### Disk usage for home (home2)

This is a plot of Disk Use on home2 against time. The plot is divided into a number of classes according to Project. This is a stacked plot so the top of the plot represents the total usage at a given time.



### Disk usage for home (home3)

This is a plot of Disk Use on home3 against time. The plot is divided into a number of classes according to Project. This is a stacked plot so the top of the plot represents the total usage at a given time.



### Disk usage for home (home4)

This is a plot of Disk Use on home4 against time. The plot is divided into a number of classes according to Project. This is a stacked plot so the top of the plot represents the total usage at a given time.

